

Move From ACPC to LSCB. Child Protection to Safeguarding.



lancashire safeguarding children board



LSCB Replaced the ACPC

- LSCB is now on a statutory footing.
- Roles and responsibilities included in Chapter 3 of 'working together to safeguard children'.



Duty to Co-operate

- Effective integration of children's services is already in place in many areas. The Children Act 2004 strengthened this through a duty to co-operate and a leadership role for local authorities to bring together local partners through children's trust arrangements.
- All organisations need to listen and be responsive to the diverse needs of children, young people, their families and communities, and to recognise that safeguarding children and young people from harm must be everyone's business.



Every Child Matters – Outcomes

- The government's aim is for every child, whatever their background or their circumstances, to have the support they need to:
- Be healthy
- Stay safe
- Enjoy and achieve
- Make a positive contribution
- Achieve economic well-being

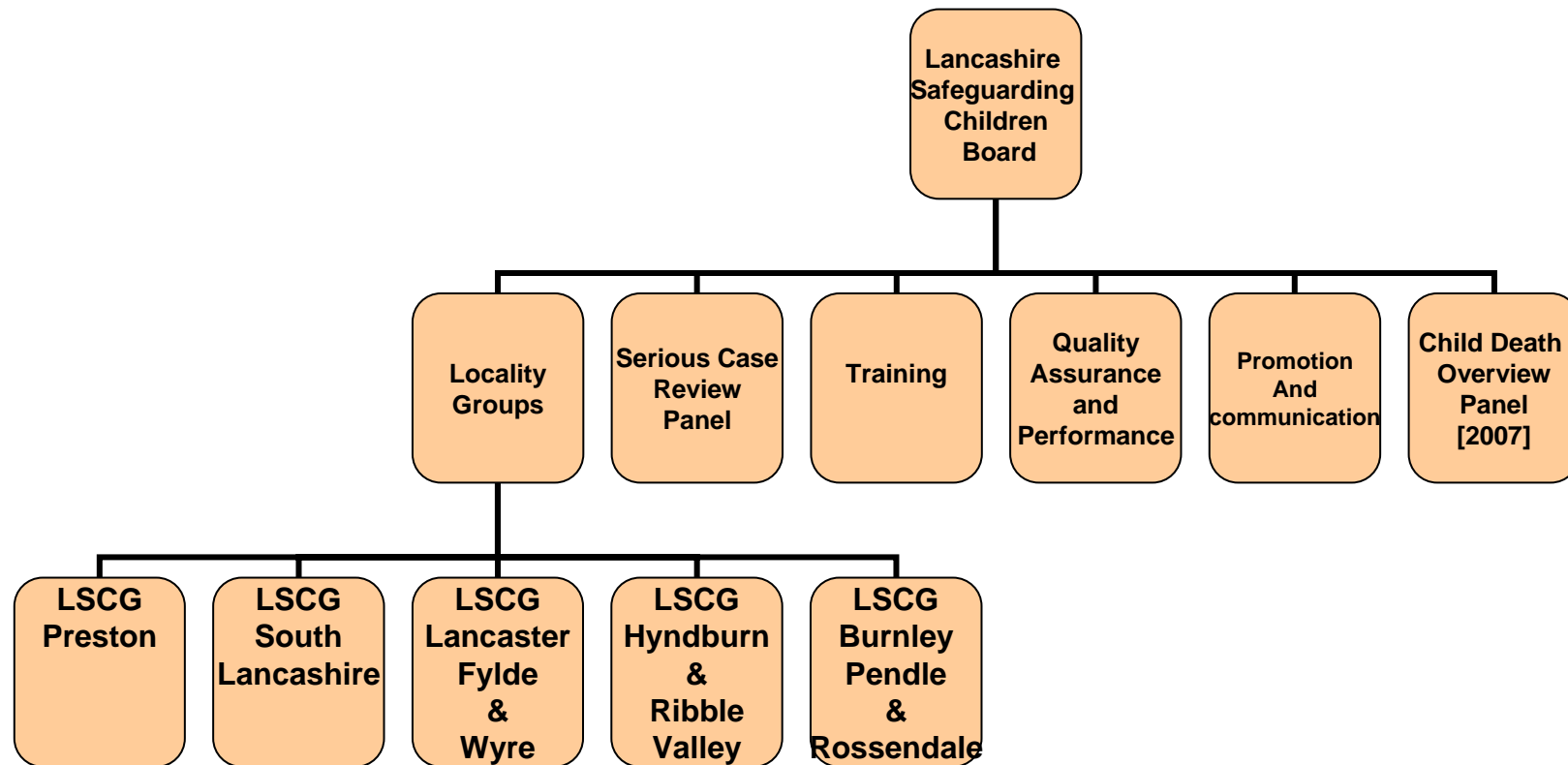


Lancashire Safeguarding Children Board

- Must exercise their statutory role effectively.
- Must be able to form a view of the quality of local activity, to challenge organisations and to speak with an independent voice.
- Must have a clear and distinct identity.
- Should not be subordinate to or subsumed within local partnership arrangements in a way that compromises its separate identity and independent voice.
- Should be consulted by the partnership on issues affecting how children are safeguarded and their welfare promoted.



Structure





Role Cont'd

- Scrutiny.
- Monitor effectiveness.
- Serious case reviews.
- Collection and analysis of information.
- Developing policies and procedures.
 - Child protection.
 - Training.
 - Recruitment.
 - Investigating allegations.
- Participate in planning.
- Communication and promotion.



LSCB Membership

- Total membership 21.
- Chair – Currently Ms Gill Rigg.
- 6 - Members from the Local Authority.
- 6 - Members from Health – Trusts and the 3 PCTs
- Police
- Probation
- CAFCASS
- HMYOI
- District Councils
- Connexions
- 2 - Schools
- NSPCC



Contact Details

- Paul Jenkins – LSCB Manager.
Tel No – 01772 530329
E-Mail – paul.jenkins@cyp.lancscc.gov.uk
- Alison Moore – LSCB Business Coordinator.
Tel No – 01772 530283.
E-Mail – alison.moore@cyp.lancscc.gov.uk