



Making Our Communities Even Safer

# The Chorley Community Safety Strategy 2005-2008



# Foreword

There have been many changes since the Chorley Community Safety Partnership was first created as a result of the Crime & Disorder Act 1998. I have watched as the Partnership has grown, become more focused and increased in confidence as initiatives have been undertaken that have had a positive impact on people's lives.

The Audit and Strategy process is a time for reflection. What has been successful over the last three years? What can be improved and what type of crime and disorder is still occurring in our community?

This comprehensive document will be the focus for the Partnership over the next three years. I look forward to supporting the Partnership as it embarks on this next exciting phase.

## **Councillor Mary Wilson**

Executive Member for Community Safety  
Chair of Chorley Community Safety Partnership

## acknowledgements

This document has been produced in Partnership with:-

**Audrey Harrison** - Community Safety Co-ordinator

**Cllr Mary Wilson** - Chair of Chorley Community Safety Partnership

**Tim Rignall** - Chorley Borough Council

**Steve Ashley** - Lancashire Constabulary

**Liz Easterbrook** - Chorley & South Ribble PCT

**John Lund** - Lancashire Fire & Rescue Service

**David Herne** - Chorley & South Ribble PCT

Other Partners have supplied information, which has been gratefully appreciated.

# Index

<b>SECTION 1: Introduction</b>	4
<b>SECTION 2: The audit of crime and disorder 2004</b>	7
National influences	9
Family group	10
<b>SECTION 3: How the priorities will be delivered</b>	11
Priority Areas 2005-2008	11
<b>SECTION 4: The Chorley community safety strategy 2005-2008</b>	13
<b>SECTION 5: Priority areas</b>	16
Priority area 1 - safe and secure homes	16
Priority area 2 - safe and secure streets	19
Priority area 3 - substance misuse	23
Priority area 4 - target areas	25
Priority area 5 - partnership development	26
<b>SECTION 6: Our pledge</b>	28
Glossary of terms	29
Consultation process	29
Membership of Chorley Community Safety Partnership	30

# Section 1

## Introduction

Crime and disorder has a major impact on everyone's lives, whether it is actual experiences of crime or living in the fear of crime.

It is only by working in a co-ordinated way, focusing both on the causes and symptoms of crime that progress can be made. Agencies and voluntary groups are an integral part of this process and only by working on sustainable solutions can a real difference be made. It is only with real commitment by Partner agencies that work can be undertaken to achieve results.

The Crime and Disorder Act 1998 was instrumental in involving other agencies in tackling community safety. It placed a statutory requirement on partners to co-operate in the development and implementation of a strategy for tackling crime and disorder in their area. This is the Community Safety Strategy. The Strategy is produced every three years and through amendments under the Police Reform Act 2002, now incorporates anti-social behaviour and substance misuse.

### The Strategy is based on:-

- The results of a crime and disorder audit.
- The audit circulated for consultation.
- Feedback from the consultation.
- Lessons learned and existing best practice.
- National influences from the Government.
- Realistic targets and priority setting.

## Community Safety 2002-2005

The Community Safety Strategy 2002-2005 was the second strategy produced by Chorley Community Safety Partnership. Seven Priority Areas within the Strategy focused the activity of the Partnership. These were:-

- Crime reduction.
- Road safety.
- Target areas.
- Youth issues.
- Town Centre crime and safety.
- Vulnerable groups.
- Misuse of alcohol, drugs and other substances.

The Community Safety Strategy 2002-2005 produced many successful initiatives involving many agencies. Below is a snapshot of some of the successes.

- Employment of a Community Safety Co-ordinator - To lead community safety work for the Partnership.
- Establishment of a Multi-Agency Problem Solving Team - To carry out the operational work.
- Employment of a Domestic Abuse Co-ordinator - To lead on domestic abuse for the Partnership.
- Awareness raising campaigns for Domestic Violence - Increase awareness for agencies and the public.
- Domestic Abuse directory launched - Improving accessibility to services.
- Development of Pub Watch scheme - Improving safety in the Town Centre.
- Extension of Town Centre CCTV system - Improving safety for the whole community.
- Awareness raising with regards dangers of binge drinking campaign commenced.
- Operation Nightsafe introduced - High profile policing to improve safety.
- Bonfire initiative introduced - Reducing the number of nuisance fires.

- Secured Car Park Award on all Town Centre car parks - Reducing vehicle crime.
- Police vehicles fitted with Automatic Number Plate Recognition - Increasing identification of travelling criminals.
- Educating motorists to put property and valuables out of sight.
- Improving service and helping to understand levels of hate crime.
- Part-time Anti-Social Behaviour Co-ordinator employed - Leading on anti-social behaviour and increasing the number of ABC's and ASBO's.
- Anti-Social Behaviour Strategy adopted by Partnership - Providing co-ordinated approach to ASB.
- Neighbourhood Warden scheme introduced - Providing high profile presence for the community.
- Drugs Strategy produced - Providing direction for Drug Action Group.
- Tower Scheme introduced, targeting prolific drugs offenders - Reducing drug related crime.
- Choices Drug Education taken into local schools - Raising awareness in young people.
- Age Check Scheme introduced, targeting under-age drinking - Raising awareness for young people and retailers.
- Awareness raising campaigns regarding speeding, seat belts and drink driving - Educating road users.
- Sites of community concern regarding speeding submitted to Lancashire Road Safety Department - Targeting areas of community concern.
- Traffic calming measures introduced on Devonshire Road, Great Greens Lane, Moor Road, Euxton Lane, Sheephill Lane, Eaves Green Road and Stump Lane area - Targeting problem areas.
- Education packs regarding road safety available to all Year 1 and Year 2's in schools - Educating road users at an early age.
- Be safe campaign aimed at school children - Raising awareness with young people.
- Walking bus scheme developed in Clayton-le-Woods - Reducing cars outside school.
- Lancashire Road Safety roadshow visiting Chorley - Increasing awareness.
- Links developed with Racist Incidents Panel - Improving service.
- Links developed with Asian Women's Forum - Increasing communication with vulnerable groups.
- Training of racist incident reporting delivered - Increasing awareness with agencies.
- Third party racist incident reporting set-up - Improving reporting facilities.
- Asian CAB service set-up with Doctor's Surgeries - Improving access to advice.
- Multi-cultural events held - Improving awareness of various cultures.
- Work with schools regarding bullying - Increasing intolerance of anti-social behaviour.
- Positive Intervention Group established - Targeting young people who are entering into criminal activity by providing diversionary activities.
- Healthy schools network established - Raising awareness about health for young people.
- Fire safety schemes promoted - Reducing accidental fires.
- Citizenship introduced into schools - Improving behaviour.
- Sporting facility developed in Chorley South West - Improving facilities within target area.
- Mobile phone marking - Increasing awareness, reducing theft.
- Under aged drinking targeted - Targeting retailers and young people.
- Review of Juvenile Nuisance - Assessing problem and response.
- Positive activities for young people - Providing diversionary activities for young people in school holidays.
- SPLASH scheme introduced - Diversionary activities for young people.
- School holiday activities introduced - Diversionary activities.

# Section 2

- Youth Referral Scheme used - Targeting young people taking part in pre-criminal behaviour.
- GRIP Scheme introduced - Providing support/diversion for young people.
- Reparation work developed through Youth Offending Team - Giving something back to the community.
- Anti-Social behaviour contracts and orders targeted to problem individuals - Anti-social behaviour not accepted.
- Town Centre Radio Scheme extended - Improving communication.
- CCTV introduced into business areas of Clayton Brook and Eaves Lane - Improving safety to outlying areas.
- Crime prevention work carried out on business premises - Reducing crime.
- Secured by Design promoted - Reducing opportunities for crime.
- Work on Secured by Design with developers of Buckshaw Village - Designing out crime.
- Off-road motorcycle initiatives undertaken - Targeting problem areas.
- Operation Calm introduced, targeting juvenile nuisance - High profile policing in target areas.

**These schemes all helped to achieve reductions in crime and disorder and recent increases in reporting with regards to Domestic Abuse (see table below):-**

It has also helped to achieve major improvements in engagement by both agencies and local communities. Some of these achievements are intangible but are no less important for the long-term impact of the strategy and Community Safety. Communities are actively involved in their areas and feed in to decisions that the Partnership make. Agencies also have made policy changes that support Partnership activity. There are many areas that have had an impact, but Clayton Brook stands out as a shining example. The agency involvement has increased in the area, initiatives have been undertaken and the community is heavily involved in decisions and the development of the area. Residents in the area have noticed improvements. A resident stated that "I have noticed a change in the village centre. You don't see people smashing bottles or fighting. Now it's a lot cleaner and I can go out in my car and I'm not afraid to stay out. I even walk to my friend's house across the road. I was too frightened to do that before."

	April 2001 to March 2002	April 2002 to March 2003	April 2003 to March 2004	April 2004 - Feb 2005 <small>(further info not available as document went to print)</small>
Burglary Dwelling	775	577	478	319
Vehicle Taking	406	371	259	253
Theft from a vehicle	815	740	587	632
Domestic Abuse	964	792	583	630
All Deliberate Fires	366	437	584	300

## The Audit of Crime, Disorder and Community Consultation

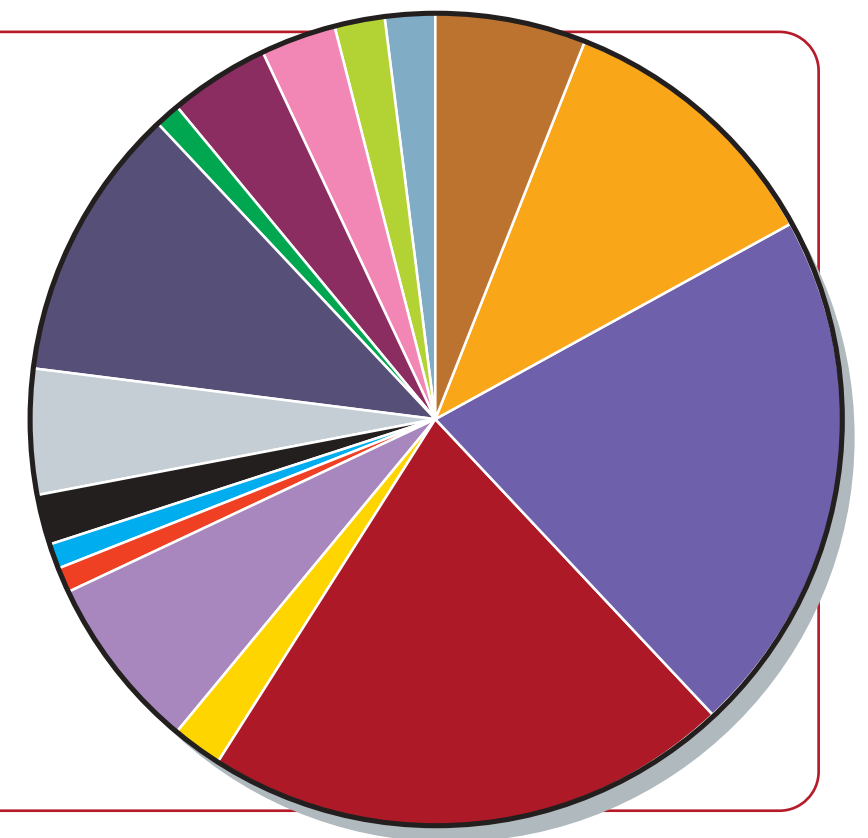
Chorley Community Safety Partnership must look at the levels and trends of crime and disorder in the Borough every three years and publish a report based on the findings - this is called the Crime and Disorder Audit. A copy of the full audit is available on the Safer Lancashire website, [www.saferlancashire.co.uk](http://www.saferlancashire.co.uk) or the Chorley Borough Council website, [www.chorley.gov.uk](http://www.chorley.gov.uk).

This audit covers a range of issues, including quality of life and fear of crime. Many agencies contributed information to ensure we had a complete picture of the Community Safety issues within the area.

### Key Findings from the Audit.

**Breakdown of all crime in Chorley (April 2003 to March 2004)**

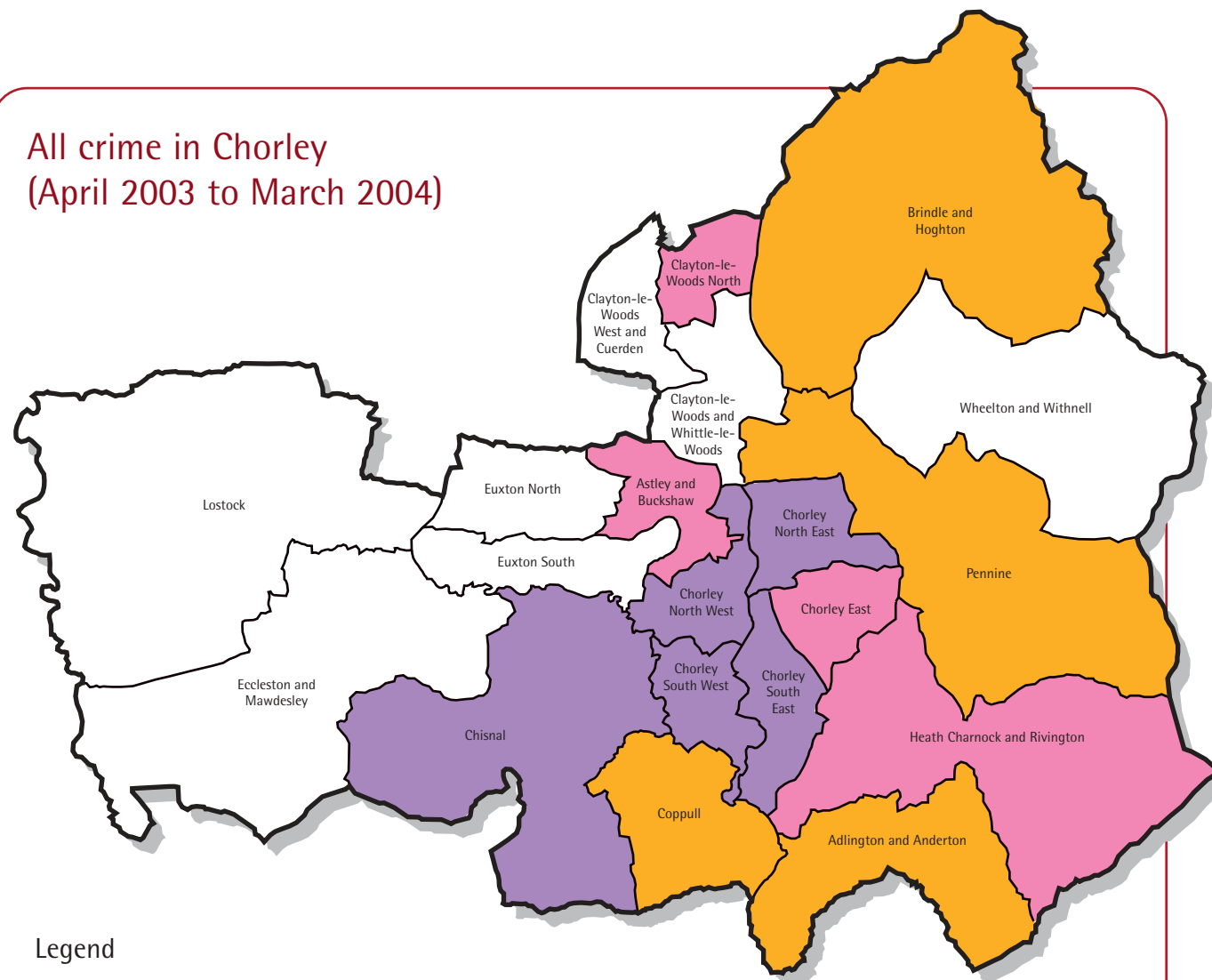
- Burglary Dwelling 6%
- All Vehicle Crime 11%
- All Violent Crime 21%
- All Criminal Damage 21%
- Arson 2%
- Burglary Other 7%
- Theft from the Person 1%
- Theft in a Dwelling 1%
- Theft of Pedal Cycles 2%
- Shoplifting 5%
- Other Stealings 11%
- Other Thefts/Handling 1%
- Fraud Et Forgery 4%
- All Drugs Offences 3%
- Vehicle Interference 2%
- Other Criminal Offences 2%



### The top crimes in Chorley are:-

- > Criminal damage
- > Violent crime
- > Vehicle crime
- > Burglary other - includes burglaries in sheds and garages
- > burglary dwelling

All crime in Chorley  
(April 2003 to March 2004)



Legend  
 93-197  
 64-92  
 49-63  
 34-48  
 Rate per Thousand Population

Source: Lancashire Constabulary/MADE

	April 2001 to March 2002	April 2002 to March 2003	April 2003 to March 2004
Number of Crimes	7456	6827	7737
Rate per 000 Population	74.2	68.0	77.0
Lancashire (Rate per 000 Population)	96.0	91.0	105.5

Deliberate fires involving property have increased, but remain below the country average.

	April 2001 to March 2002	April 2002 to March 2003	April 2003 to March 2004	Lancashire Average April 2003 - March 2004
Property (excluding vehicles)	34	43	55	121
Vehicles	79	57	78	97
Secondary fires (grass, rubbish etc)	244	242	454	718

In the period 01/04/03 - 31/03/04 CBC Neighbourhood Wardens dealt with a total of 5,896 incidents of anti-social behaviour.

The highest wards for reporting incidents of juvenile nuisance are Chorley South East, South West and Coppull.

Heroin remains the first drug of choice in Chorley.

Domestic burglary is displaying a consistent reduction over the three year period of the last strategy.

Vehicle crime has shown a steady reduction, although there has been a recent increase in theft from a vehicle.

The audit has been presented to a number of agencies and community groups for consultation. The main comments have been that onstreet vehicle crime needs to be included and that further promotion of the Partnership and the work it undertakes should be carried out. These comments have now been incorporated into these documents.

Top Community Concerns are:-

- Groups of youths hanging around.
- Vehicle and transport safety.
- Young people drinking.
- Feeling unsafe when visiting the Town Centre at night.
- Residents are concerned about the safety of their home.
- Dog fouling, litter and damage are concerns.

# Section 3

## National Influences

The Community Safety Strategy is aimed to set local priorities to address local issues, though national influences do have an impact on the Community Safety Partnership and the priorities it sets.

For this Strategy, the following have had an impact on priority and target settings:-

- Alcohol Strategy.
- Licensing Act.
- Domestic Abuse Strategy.
- Anti-Social Behaviour Act.
- National Intelligence Model.
- Drug Strategy.
- Prolific and Other Priority Offenders.

## Prolific and Other Priority Offenders

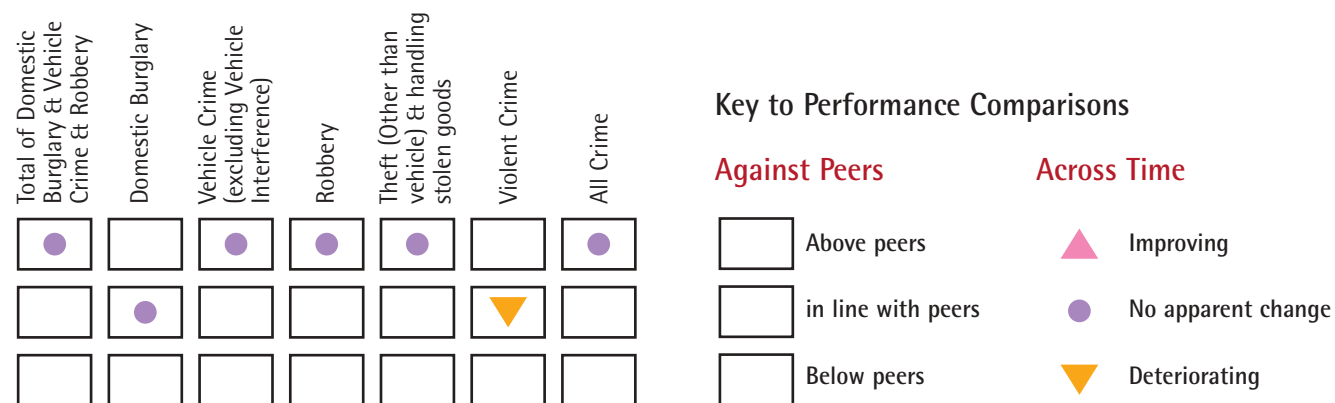
A new initiative from Government targeting the most prolific offenders in the area. It is estimated that 10% of offenders are responsible for committing 50% of all crime. Because of the dramatic effect prolific offenders can have on crime, Chorley Community Safety Partnership will embrace this new initiative, to engage a partnership programme, targeting offenders, bring them to justice, try to correct their offending and rehabilitate them into mainstream society. The scheme falls into three stands - Prevent and Deter, which tries to divert people before they commit crime, lead agency Youth Offending Team. Catch and Convict, targeting offenders, lead agency the Police and Resettle and Rehabilitate, which tries to deter offenders continuing with criminal behaviour, lead agency Probation.

Our intention is to ensure through dialogue with all the agencies above, the individuals on the programme, are those who are the most prolific, the most persistently anti-social and those who pose the greatest threat to the safety and confidence of the local communities they belong to. A longer term aim will be to try and identify potential young offenders and target resources to deflect them from becoming offenders.

## How are we doing

The Home Office has grouped together partnerships with the same social, economic and population characteristics into family groups, so that comparisons can be drawn.

The graphs show that Chorley compares very favourably with others in this group.



Source: iQuanta Data to the end of May 2004

## Our Priorities and how they will be Delivered

Community Safety is more than a list of priorities in the Strategy. To be successful and be able to deliver, the Strategy must be supported by an effective Partnership. Within Chorley the emphasis is on operational working. We believe in action, not talking and the structure of the Partnership reflects this.

### Priority Areas 2005-2008

Analysis of the audit and consultation and consideration of national influences have seen a number of priorities emerge.

#### Safer and Secure Homes - tackling issues around:-

- Burglary
- Domestic Abuse
- Fire

#### Safe and Secure Streets - reducing crime on our streets by targeting:-

- Youth Issues
- Town Centre Crime
- Violent Crime
- Road Safety
- Anti-Social Behaviour
- Racially Motivated Crime
- Homophobic Crime

#### Substance Misuse - linking to the National Drugs Strategy, tackling misuse in:-

- Drugs
- Alcohol

#### Target Areas - providing support to the areas with the higher than average community safety issues:-

- Chorley East
- Chorley South West
- Clayton Brook
- Coppull

# Section 4

Partnership Development - to provide the tool to deliver the aims within the strategy:-

- Increased Active Membership
- S.17 Training.
- Improved Linkages to LSP.
- Terms of Reference
- Information Sharing.

The Community who were consulted through the Citizen's Panel have supported these priorities. More than 90% of respondents consider that 'Safe and Secure Homes' and 'Safe and Secure Streets' are very important objectives within the Strategy. The goals within Safe and Secure Homes are all seen as important. Within Safe and Secure Streets, reducing juvenile nuisance, reducing violent crime and reducing anti-social behaviour were cited as very important by over 80% of respondents. Two thirds of respondents support the objective of prioritising target areas.

Feedback is received from both agencies and the community. In particular, the Target Area Groups consist of residents, who feedback on the work, priorities and impact of the Partnership. Work with agencies, such as Age Concern, Asian Women's Forum, Domestic Abuse Forum and the Youth Council is undertaken to improve communication and links with hard to reach groups.

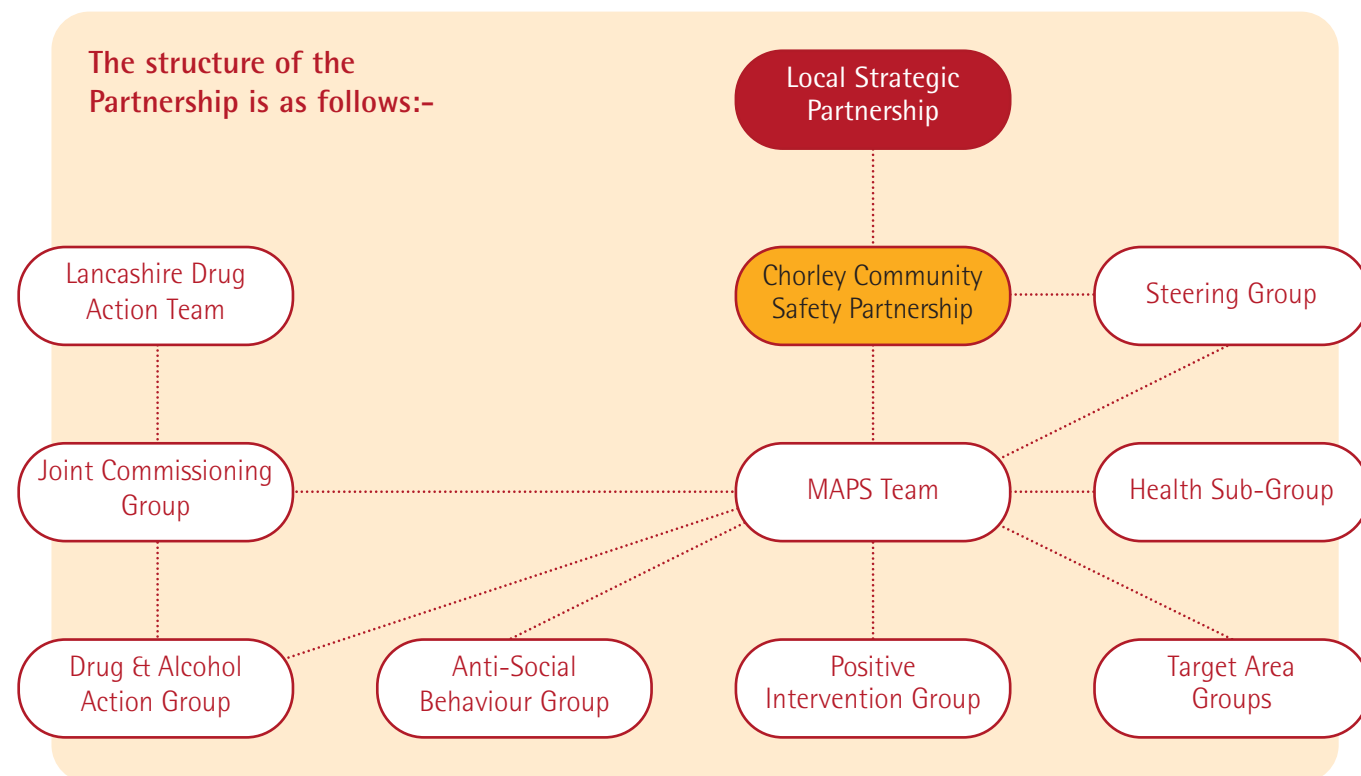
# The Chorley Community Safety Strategy

## 2005-2008

### Introduction

Each of the Priority Areas are outlined in the following pages. This includes the objectives, what actions will occur to achieve the priorities, who is responsible for the actions and what specific and measurable targets will be used to monitor progress. An Action Plan will be used by the Partnership to provide details of action undertaken and progress made.

The structure of the Partnership is as follows:-



## Target Setting

A number of agencies have targets relating to community safety. As far as possible these targets have been incorporated into the priority areas.

The Home Office have Public Service Agreements (P.S.A.'s) to set their priorities over the next four years. There are four that affect community safety.

**P.S.A. 1** - To reduce crime by 15%. Within Chorley we will be looking at reducing theft from vehicles, theft of vehicles, vehicle interference, criminal damage, common assault and woundings. We will be looking to maintain the current low levels of burglary dwellings

**P.S.A. 2** - To reassure the public, reducing the fear of crime and anti-social behaviour.

**P.S.A. 4** - Reduce the harm caused by illegal drugs, including substantially increasing the number of drug misusing offenders entering treatment through the criminal justice system.

**P.S.A. 6** - Increase voluntary and community engagement, especially amongst those at risk of social exclusion.

Performance management is vital for the Partnership. This has to be balanced with changes in recording practices, compatibility differences of data from different agencies and national targets. Realistic target setting will enable the Partnership to:-

- Clarify to Partners what we are aiming for.
- Providing clarity about expectations.
- Provides markers for checking work.
- Assesses achievement.

### The vision of the Partnership is:

*"To create an even safer community for people to live, work and play."*

### To achieve this we will:

- Create a Borough where people feel safe and secure in their homes.
- Reduce crime and disorder and the fear of crime, so that people feel safe and secure using the Borough's streets.
- Minimise the impact of substance misuse on crime and feelings of safety in the Borough.
- Improve community safety in the Borough's most vulnerable areas.
- Provide the appropriate Partnership mechanisms to deliver the Community Safety Strategy 2005-2008.

## In pursuing these aims we will have regard and support the Home Offices PSA's and will:-

- Reduce crime in-line with PSA1 by 15%.
- Reduce the fear of crime and anti-social behaviour in-line with PSA2.
- Support LDAT in reducing the harm caused by illegal drugs in-line with PSA4.
- Increase voluntary and community engagement in-line with PSA6.

## Funding

Chorley Community Safety Partnership attracts a Home Office allocation each year to support Partnership activity. The funding is closely linked to the priority areas within the strategy. The PSA targets (Public Service Agreements) mentioned above, sets the priorities for the Home Office over the spending review period 2005/06 to 2007/08. These are central to delivery of the vision set out in the Home Office Strategic Plan. The delivery of these targets will depend on a range of frontline services and the Partnership, working to shared national and local priorities as well as local needs. It will be the responsibility of the Steering Group to assess funding applications at a local level, ensuring they give value for money and will achieve the targets set-out in the strategy.

The new funding stream will be known as Safer and Stronger Communities Fund. It brings together a number of existing funding streams, which are designed to reduce crime, tackle anti-social behaviour, improve public spaces and ensure services are more responsive to local needs. Local Area Agreements will be drawn up to aid a more locally driven approach to how decision making and services are delivered. Within Chorley, the LAA is likely to be based at LCC level. How the Partnership will feed into the process is still being developed.

## Links to Other Partnership Plans

The Partnership operates as a sub-group of the Local Strategic Partnership. Where possible this plan links closely to Partnership agency plans.



# Section 5/ priority 1

## Safe and secure homes

### Aim:

Create a Borough where people feel safe and secure in their homes. There are 41,027 households in Chorley and the quality is generally very good. A large number of new houses have been built over the last few years, reinforcing the need to target the area, providing safe homes for the community.

### Objectives:

- To sustain the low level of domestic burglaries, using Police figures as a baseline.
- To increase the number of incidents of domestic abuse reported to agencies, using agency baseline figures. Domestic abuse figure based on police 2004/05 baseline figure.
- To reduce the number of accidental dwelling fires, using Lancashire Fire & Rescue baseline figures. Based on 2004/ 05 baseline figure of 65.

### Targets:

- To maintain the number of burglary dwellings in-line with local Police target by March 2008.
- To increase the number of reported domestic abuse incidents by 15% by March 2008.
- To reduce the number of accidental dwelling fires by 18% by March 2008.

Domestic burglary is the lowest it has been for twenty years. This is a major success, but it is important that work is undertaken to maintain levels.

### Approaches:

- Promote Secured by Design within CBC Planning Department - Raising awareness.
- Advise on plans on new build sites within the area - Designing out crime at the planning stage.
- Target prolific offenders through Priority and Prolific Offender Programme.
- Promote Neighbourhood Watch in areas with little or no coverage - Improving community awareness and cohesion.
- Support existing Neighbourhood Watch schemes.
- Promote and support Anchor Staying Put scheme - Providing physical security for the elderly.
- Raise awareness of Crime Prevention with householders - providing advice.
- Extend Alleygate scheme - Reducing crime and misuse of rear alleyways.
- Support schemes such as Tower/Operation Nimrod - Targeting offenders.

Domestic abuse is very much a 'hidden crime'. It is important we create an environment that will encourage victims to approach agencies for help and support and ensure agencies are better equipped to offer the support needed. Within Chorley a Domestic Abuse Strategy is being produced that will provide focus.

The Domestic Abuse Strategy is very much a document that is supported by the Partnership. The following is a summary of the Domestic Abuse Strategy for Chorley.

**Aim 1 - To increase safe choices and quality of support for those, predominantly women and children, who experience domestic abuse.**

### Approaches:

- More support services.
- Develop agreements on sharing information and improve data recording.
- Training courses on domestic abuse.
- Encourage individuals to report.
- Local research and recommendations for improvements.

**Aim 2 - To hold abusers, individually and collectively accountable for their behaviour.**

### Approaches:

- Link work of domestic abuse forum with Lancashire Criminal Justice Board.
- Develop witness and victim support services.
- Explore local work with abusers.

# Section 5/ priority 2

**Aim 3 - To challenge those social attitudes, which promote or collude with domestic abuse.**

**Approaches:**

- Campaigns on domestic abuse.
- Distribute information.
- Raise the profile of forum and encourage better attendance.
- Develop domestic abuse workplace policies.

**Aim 4 - To provide children and young people with the motivation and skills needed to develop non-abusive and respectful relationships.**

**Approaches:**

- Develop education and preventative work with young people.
- Develop gender specific work for boys & girls.
- More support services for children and young people.

**Fires within dwellings are showing a steady increase. Action needs to occur to reduce this trend.**

**Approaches:**

- Promote free home safety checks and fitting of smoke detectors - Reducing accidental fires.
- Promote the enhancement of the home fire safety check process in Partnership - improving the service provided.
- Input to schools for fire safety advice - Raising awareness with young people.
- Include fire safety advice in all Community Safety Partnerships newsletters.
- Lancs Fire and Rescue staff to continue to deliver fire safety education in schools.
- Promote the fire safety advice freephone telephone number in all Community Safety Partnership newsletters.
- Undertake relevant initiatives, such as Operation Cascade in the run up to Bonfire Night - targeting specific problems.

## Safe and secure streets

**Aim:**


This priority area covers the wide-ranging problems that can affect the community while using the streets in the area. To reduce crime and disorder and the fear of crime, so that people feel safe and secure using the Borough's streets.

**Objectives:**

- To assess youth issues within the area, looking at symptoms and causes.
- To reduce the repeat offending rates of youths involved in the criminal justice system, using YOT data.
- To increase the levels of safety within the Town Centre at night, using fear of crime survey.
- To improve road safety within the Borough, using Lancashire Partnership for road safety.
- To assess and tackle causes of anti-social behaviour.
- To increase reports of racially motivated and homophobic crime.
- To reduce onstreet vehicle crime, using police baseline figures.
- To reduce levels of violent crime.

**Targets:**

- To reduce reported levels of anti-social behaviour by 5% by March 2008, based on new incident figures commencing April 2005.
- To reduce reoffending rates by YOT PSA 4 by 27.6% by March 2006.
- To prevent young people from coming to the attention of the YOT, over the lifetime of the YOT PSA 8% in Chorley by March 2006.
- To reduce alcohol related violent offences in town centre in-line with PSA1 target by March 2008.
- To support Lancashire Partnership for Road Safety in achieving a 40% reduction in the number killed or seriously injured in road accidents, a 50% reduction in the number of children killed or seriously injured and a 10% reduction in the slight casualty rate.
- To reduce the number of deliberate secondary fires by 5% by March 2008 based on 2004/05 baseline figures.
- To reduce number of violent incidents against public service staff.
- To improve feelings of safety during the day by 10% by March 2008.
- To reduce the number of theft from vehicles and theft of vehicles in-line with PSA 1 by March 2008
- To increase levels of recorded racist incidents and homophobic incidents by 10% based on Police statistics by March 2008.
- To improve feelings of safety during the night by 15% by March 2008.
- Reduce Criminal Damage in line with PSA1 by March 2008.



Juvenile nuisance has shown a steady increase over the last 3 years. Work will be undertaken to redress the balance and start to bring the levels down.

**Approaches:**

- Assessment of youth provision in the area undertaken, including what impact youth facilities are having - to enable targeting of resources.
- Increased liaison with schools i.e. through Operation Calm and other initiatives - increasing involvement of teachers.
- Hotspot areas targeted by Neighbourhood Wardens.
- Problem individuals targeted through Positive Intervention Group and Anti-Social Behaviour Group - providing diversionary activities and enforcement.
- Work with Leisure Services to appropriately target play equipment.
- Problem individuals targeted through schools.
- Truancy sweep undertaken.
- Test purchasing undertaken.
- Development of mediation/inter-generational work.
- Improving communication of available facilities to young people.
- Support environmental audits to reduce rubbish/fuel on streets.

**Persistent Young Offenders can cause major disruption for local communities. These individuals will be targeted to prevent reoffending.**

**Approaches:**

- Consult young people in relation to the impact of the offence and reparation.
- Refer appropriate young people to PAYP.
- Development of Prevent and Deter strand of Priority and Prolific Offender Scheme.
- Work with Positive Intervention Group to provide diversionary support.
- To refer siblings of young people known to the YOT to GRIP.
- To develop links with Chorley Parenting Forum.

Levels of fear of crime on visiting the Town Centre at night remain high at 60% of residents expressing feelings of unsafety. Although still unacceptably high, this is a reduction of 21% over the last 3 years.

**Approaches:**

- Work with Pub Watch to promote safety within the Town - Improving communication.
- Work with the Licensing Department on new and existing licenses - Encouraging licensees to consider community safety.
- Offer crime prevention advice to new applications - Reducing the opportunities for crime.
- Extend and support Town Centre CCTV system - Reducing opportunity for crime.
- Support and maintain Town Centre Radio Scheme - Improving communication.
- Promote Secured by Design Car Parks - Reducing vehicle crime opportunities.
- Continued support of Nightsafe initiative - High visibility police presence within the Town Centre.
- Fully utilise enforcement methods - Banning individuals from the Town Centre.

**There have been major issues with the recording of violent crime in recent years. This has resulted in a large increase in recorded violent crime, but this has not been supported by agency perception of the situation.**

**Approaches:**

- Work with A&E to provide information on violent crime - Enabling a clearer picture to emerge.
- Maintain a baseline position from police statistics - Monitoring information gathered.
- Assess potential of other agency involvement in recording practices.
- Target initiatives to combat violent crime.
- Target Town Centre visitors, especially those enjoying a night out in Chorley.
- Work with agencies to reduce opportunities of violence against staff.

**Over the last 3 years work has been undertaken to support Lancashire Partnership for Road Safety. This has been very successful, in particular the community submitting sites of community concern for speeding traffic.**

**Approaches:**

- Promote campaigns issued from Lancashire Partnership for Road Safety - Raising awareness.
- Submit sites of community concern - Responding to community concerns.
- Support traffic calming measures when appropriate - Reducing accident hotspots.
- Promoting school travel plans - Discouraging vehicular use.
- Improving street lighting schemes within the Borough - Reducing fear of crime.
- Promote education campaigns - encouraging motorists to remove valuables from vehicles.

Anti-social behaviour can have a devastating impact on a community. With the introduction of the Neighbourhood Warden scheme in 2002 and an Anti-Social Behaviour Co-ordinator in June 2003, anti-social behaviour issues are targeted.

#### Approaches:

- Developing initiatives on public transport - Reducing crime.
- Neighbourhood Wardens targeted to identified hotspots - Providing a visible deterrent.
- Work with relevant agencies to design out problem areas - Reducing opportunities for ASB.
- Anti-Social Behaviour group maintained - Targeting offenders.
- Anti-Social Behaviour Contracts used when appropriate - Discouraging ASB.
- Anti-Social Behaviour Orders applied for as a last resort - Targeting persistent offenders.
- Dispersal notices and Parenting Orders used when appropriate - Targeting hotspot areas and ensuring parents take responsibility.
- Working with young people regarding anti- social behaviour on public transport - Educating young people regarding acceptable levels of behaviour.

Racially motivated and homophobic crime has historically been under reported. Work was undertaken in the last strategy to increase reporting of incidents. This work needs to be continued.

#### Approaches:

- Support Racist Incidents Panel.
- Actively encourage 3rd party reporting.
- Encourage reporting by agencies of homophobic incident reporting.
- Provide support to victims, particularly repeat victims.
- Support the work of groups such as POUT.

## Substance misuse

#### Aim:

To minimise the impact of substance misuse of feelings of safety and crime in the Borough. In doing this we will support the aims within the National Drugs Strategy key performance indicators.

#### Objectives:

- To reduce the availability of Class A drugs.
- To target offenders, through enforcement and supporting them through treatment.
- To improve support services.
- To reduce alcohol related disorder.
- To support alcohol support services.

#### Targets:

- Establish availability of alcohol support services in the Borough and identify where necessary possible service developments to address gaps in service provision.
- To support LDAT target of increasing people accessing treatment by 9% each year.
- To support LDAT in delivering KPI targets with regards to young people.
- To support D.I.P. targets.

Substance Misuse has a major impact on the community. Lancashire Drug Action Team provides the lead on drug services within the area, but the Partnership plays an important part in tackling problems on a local level.

#### Approaches:

- Continued support of Drug and Alcohol Action Group.
- Set-up Health Sub-Group.
- Initiatives undertaken targeting drug dealers and users - Through Policing activity.
- Choices drug programme delivered in schools - Providing education for young people.
- Improve parent's knowledge and skills for discussing young peoples drug use working with the Lancashire Education Authority Teacher Advisors in offering support programmes.

# Section 5/ priority 4

- Support of Tower Scheme within Chorley - Targeting offenders.
- Increase the number of drug users managed in shared care arrangements between the Community Drug Team and their GP.
- Reduce drug-related deaths.

Alcohol misuse is a nationally recognised problem. Each area is now required to have an Alcohol Misuse Strategy. This has been embraced by the Chorley Community Safety Partnership.

## Approaches:

- Develop a local Alcohol Strategy, including covering such areas:
  - Education
  - Prevention
  - Treatment
  - Crime & Disorder
  - Working with the industry
- To work with Licensing Department and new Licensing Strategy in order that Community Safety is considered.
- Undertake training needs analysis and develop package for front-line services.
- Develop referral systems for front-line services.
- Ensure appropriate alcohol support services are available for young people.

## Target areas

### Aim:

To improve community safety in the Borough's most vulnerable areas.

### Objective:

To support the areas of higher than average crime and disorder in the Borough.

### Target:

To reduce crime and disorder in the target areas to below County average by March 2008, within Chorley East, Chorley South West, Clayton Brook and Coppull.

Within the Community Safety Strategy 2002-2005 there were 3 priority areas, Chorley East, Chorley South West and Clayton Brook. As part of the Audit process an assessment was made as to if these were still appropriate. The result was that the present 3 areas, although showing substantial areas of improvement and success, still needed support. In addition, Coppull was added as an area needing particular support.

### Approaches:

- To support target area meetings.
- To identify potential funding when appropriate.
- To target Neighbourhood Wardens.
- Maintain Community Beat Managers.
- Support PACT meetings.
- Support initiatives that will improve community safety within the area



# Section 5/ priority 5

## Partnership development

### Aim:

To provide the appropriate partnership mechanisms to deliver the targets within the Community Safety Strategy 2005 -2008.

### Objective:

To improve the effectiveness of Chorley Community Safety Partnership.

### Targets:

To deliver the Community Safety Strategy between April 2005 and March 2008.

It is recognised by all agencies that the positive results seen with regards to Crime and Disorder in the area are as a result of the work undertaken by the agencies involved with the Community Safety Partnership. It is only by working together that results can be seen.

Examples can be seen at the beginning of this document, but to highlight a few:-

Targeting the run up to bonfire night and associated problems - involving MAPS Team, Environmental Services, Trading Standards, Fire Brigade and Police.

Alleygate schemes - involving MAPS Team, Environmental Services, Police, Neighbourhood Wardens, Fire Brigade and Housing.

To make the Strategy a working document, it is important the mechanisms are in place to deliver the actions. It is only through commitment of all Partners that this will occur.

### Approaches:

- To assess membership of the Partnership.
- To increase active Partner support.
- To carry out Section 17 training in Partner agencies.
- To improve linkages to Local Strategic Partnership.
- To assess the role and responsibilities of the MAPS Team.
- To define the role of the Steering Group.
- To identify funding sources, both external and mainstream.
- To assess terms of reference and protocols of the Partnership.
- To encourage Partners to access resource savings and reinvest into the Partnership.
- More media promotion of work of the Partnership.
- Improved linkages to Lancashire Drug Action Team.



# Section 6



## Our Pledge

The Community Safety Partnership is committed to delivering the targets and actions set out within this Strategy.

We believe that through action by all Partners a positive difference to our communities can be made.

An Action Plan will be produced to provide ongoing monitoring. Annual reports will provide evaluation needed to maintain focus.

In three years we can be judged as to whether we have:-

- Improved safety in homes and on the street.
- Reduced levels of substance misuse.
- Supported and improved all target areas.
- Developed the Partnership and made it more effective.



## Glossary of terms

ABC - Anti-Social Behaviour Contract  
 ASB - Anti-Social Behaviour  
 ASBO - Anti-Social Behaviour Order  
 CAB - Citizen's Advice Bureau  
 CADNWA - Chorley & District Neighbourhood Watch  
 CBC - Chorley Borough Council  
 DIP - Drugs Intervention Programme  
 GRIP - Group Intervention Panel  
 KPI - Key Performance Indicators  
 LCC - Lancashire County Council

LDAT - Lancashire Drug Action Team  
 LSP - Local Strategic Partnership  
 MAPS - Multi Agency Problem Solving  
 PACT - Police and Communities Together  
 PAYP - Positive Activities for Young People  
 PCT - Primary Care Trust  
 POUT - Power to be Out  
 PSA - Public Service Agreement  
 S.17 - Section 17, Crime and Disorder Act  
 YOT - Youth Offending Team

## Consultation process

Consultation has taken place with both the Crime & Disorder Audit and Draft Strategy. This has involved:-

### Audit Consultation

- CBC Web Page
- All Partner Agencies
- Overview & Scrutiny Panel
- Parish Councils
- Target Area Groups
- Neighbourhood Watch
- Safer Lancashire Website
- Local Media
- Government Office for the North West

### Strategy Consultation

- CBC Website
- All Partner Agencies
- All Councillors
- Overview & Scrutiny Panel
- CBC Executive Cabinet
- Parish Councils
- Target Area Groups
- Neighbourhood Watch
- Safer Lancashire Website
- Local Media
- Borough News
- LCC Executive Cabinet
- Government Office for the North West

# Membership of Chorley Community Safety Partnership

# Notes

Chorley & South Ribble District PCT Youth Offending Team	Lancashire Police Authority Chorley Borough Council
Lancashire County Council Youth & Community Service	County Palatine Housing Lancashire Probation Service
Chorley & South Ribble CVS Lancashire County Council	Chorley Borough Council Housing Groundwork Wigan & Chorley
Lancashire Fire & Rescue Service Education Welfare	Chorley Borough Council Sport, Arts & Community Development
Accent Group NW Citizens Advice Bureau	Chorley Sports Forum Government Office for the North West
Lancashire Constabulary North British Housing Association	CADNWA Witness Service
The North West Brewers & Licensed Retailers Assoc.	Clayton Brook Action Group SWITCH
Positive Action in Chorley East (PaiCE) Lancashire County Council Environment Directorate	Victim Support Network Rail
HM Prison Garth HM Prison Wymott	LAPTC GRIP
Social Services	Crown Prosecution Service

**Any further information required please contact:-**

Audrey Harrison, Community Safety Co-ordinator  
Chorley Borough Council  
Gillibrand Street  
Chorley  
PR7 2EL

**Tel:** 01257 515335  
**Fax:** 01257 515211  
audrey.harrison@chorley.gov.uk