

Management Summary

Overview of Crime, Victims and Offenders.

All crime in Fylde was slowly falling between April 2000 and March 2003. However there was a sharp upturn from this point, which is due to the change in Crime Recording (extra Violent Crime offences -see appendix E).

Overall levels of crime in Fylde are approximately half the County average. The largest volume crimes are Criminal Damage (27%) Violent Crime (18%) Other Stealings (11%) and Vehicle Crime (9%).

Burglary in a Dwelling accounted for 5% of All Crime, whilst Burglary other than in a Dwelling accounted for 8% of crime.

The Home Office (Brand and Price, 2000) suggest that Violent Crime has an average cost to individuals/households of £19,000. Criminal Damage and Vehicle Theft are significantly less at £510 and £890 respectively.

Fylde has only two Wards that have crime rates per thousand population higher than the County average (105.5), Central (234.4) and Ashton. (108.7). Both are busy Town Centre Wards.

Victims were just as likely to be female (44%) as male (56%) with approximately 5% being repeat victims.

Offenders, however were predominately male (80%) and aged between 15 and 25 years.

Although 46% of offenders lived and committed their crimes in Fylde, 54% migrated into the district in order to commit their crimes.

The top 14% most prolific offenders in Fylde were responsible for 39% of detected crime during the period of study.

Property crime accounts for 78% of both Police recorded crime and crime identified through the British Crime Survey (BCS).

The BCS also tells us that crime is falling (5% over the last year) and has fallen by 39% since 1995. The chances of becoming a victim have fallen from 40% to 26% which is the lowest level since the BCS began in 1981. The proportion of People who believe crime is rising has fallen compared to the previous year.

Fylde Borough Council's customer satisfaction survey asked what factors were important in making a good place to live? The top 5 answers were:-

Low levels of crime (67.5%)
Health Services (54.4%)
Clean Streets (42.6%)
Shopping Facilities (41.8%)
Parks and Open Spaces (30.7%)

Respondents were also asked what needed improving the most in the community? Crime was placed third (39.3%) after road/pavement repairs (47%) and Activities for teenagers.(39.5%)

Lancashire County Council and the Police Authority have also conducted surveys. ('Life in Lancashire' and 'Opinion'). Results from both panels were very similar where similar questions were asked:-

26% of respondents felt that their quality of life was negatively affected by crime.

Groups of youths hanging round, dog fouling, rubbish and litter lying around were the three biggest issues in Fylde in these surveys. Bogus callers were also considered a threat to people's feelings of safety at home.

The CDRP held two consultation evenings one in Lytham and the other at Wesham to canvas the views of the Public. There was a low turnout but the issues highlighted were:-

- More high visibility police.
- Blanket ban on alcohol and tobacco
- Look after youngsters more
- Address problems with the private children's homes
- Alleygates ASAP
- Better street lighting in back streets and ginnels
- No late night fast food in residential areas
- More support for families and parenting skills
- Civic projects that involve communities (all ages)
- Noise nuisances
- Speeding
- Mobile Phone (Motoring) – enforcement
- Car Parking
 - on pavements
 - particularly a problem for people with prams, wheelchairs etc
- More activities in areas e.g. backstreets, old railway station platforms etc. (Redevelop and regeneration needed) As part of this consider the needs of young people (This is to be taken up by the LSP to develop the possibility of funding to support community activities)

- H bars, drop curbs to be left free
- Education

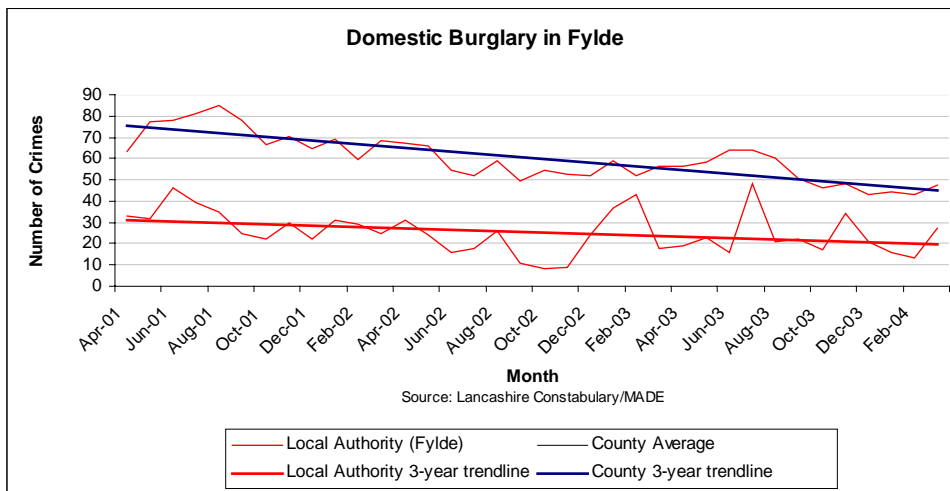
Lancashire Constabulary's Community Beat Managers are introducing monthly 'Police and Community Together' (P.A.C.T.) meetings where issues specific to individual Wards can be discussed and the top three will be identified and addressed. To date the general problems are Anti Social Behaviour issues such as dog fouling, Speeding, Parking, Litter, Underage drinking, as well as more police patrols and Alcohol street drinking bans.

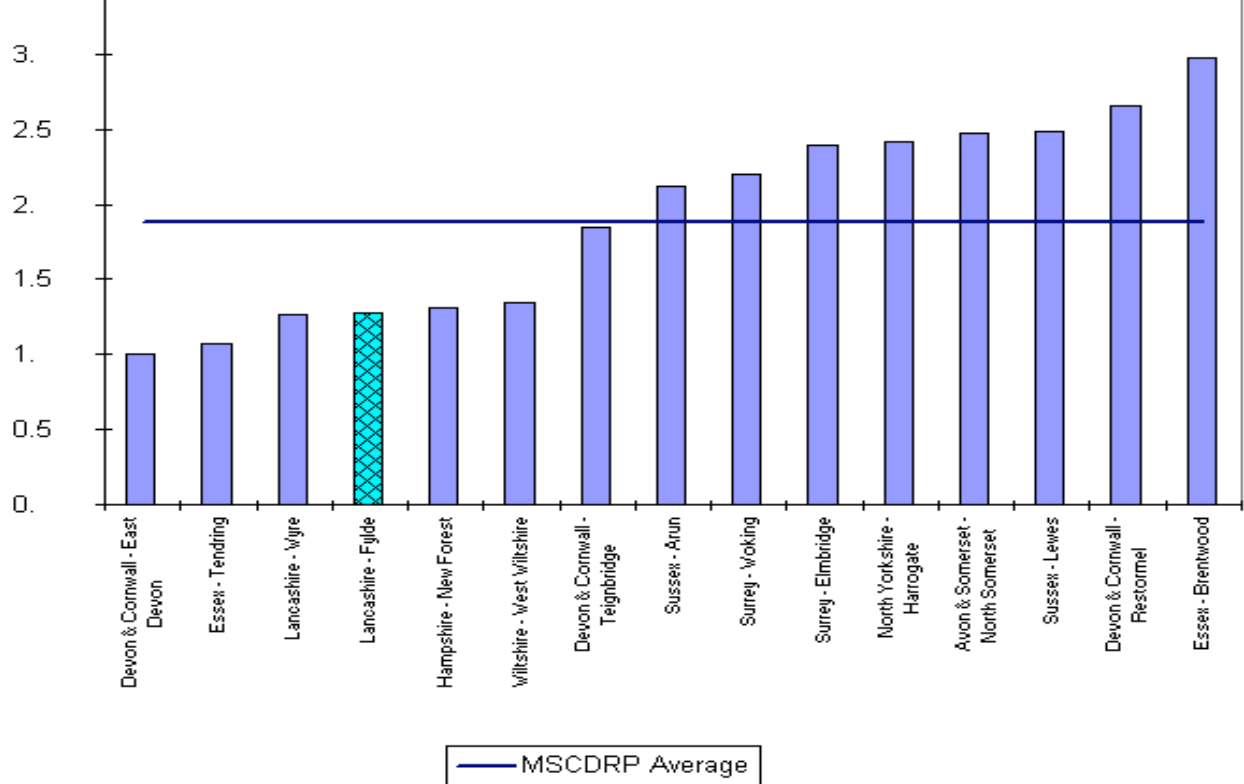
The business community said the availability of alcohol to youngsters was the most important issue to them. None would relocate, even if it didn't cost them anything to do so.

Safe and secure homes

Analysis of Fylde's housing situation shows quite clearly the need for affordable family accommodation. In particular it shows lone parents accounting for 16.7% of total households in need in the borough. Lone parents in poor or inadequate accommodation are big risk factors for Youth offending.

Domestic Burglary continues to show a downward trend although not as sharp as the County wide 3 year trend.





Crimes per 1000 Households - Domestic burglary (less attempts) - 01 Jan 2004 - 31 Mar 2004

Comparison with the 14 other 'most similar CDRP's we have been grouped with shows Fylde performing well and provides further evidence that this sort of offending is not a major problem in our area.

Stealing in a dwelling has shown a slight percentage rise from April 2000 but still remains low in terms of actual numbers, ranging between 0 and 11 per month but with an average of 4.52.

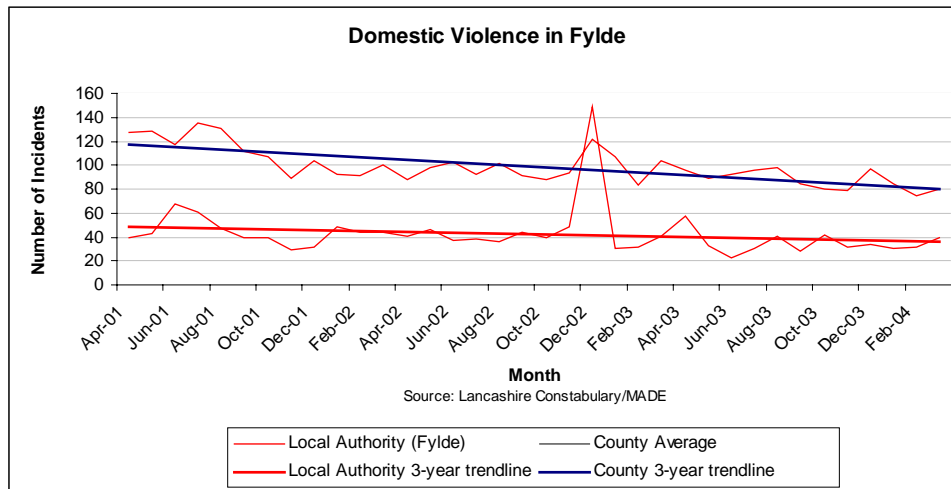
Preferred items to steal have changed since the late 1990's with cheque cards, cheque books, mobile phones replacing TV's, video recorders and jewellery. (BCS 2002/03)

8 Distraction Burglaries were recorded during FY 2003/04 in the Fylde area and all victims were aged over 60years. It is accepted that this is most likely an under recording due to:-

- Embarrassment**
- Fear of reprisals**
- Victim unaware that property has been stolen**
- Belief that reporting is futile**

'Life in Lancashire' and 'Opinion' found that 96% of residents of Fylde felt safe in their homes during the day. This figure fell slightly to 93% at night. Bogus callers were the biggest fear for residents at home.

Domestic Violence data is recorded by the Police as an Incident. If it is also a crime then it is recorded under the specific crime type.



No data is gathered by the Constabulary about the victims of Domestic Violence.

The Police Domestic Violence Unit will change to the Public Protection Unit and will be dealing with offenders as well as victims.

Research tells us that only between 12 and 20% of domestic violence incidents are reported to the police.

The Women in Safe Environments (WISE) Survey (2001) found that 9% of all respondents in Fylde had experienced Domestic Violence but of these only 50% had reported the crime.

Of those victims who reported Domestic Violence, a large proportion were repeat victims, with repetition being more than three times.

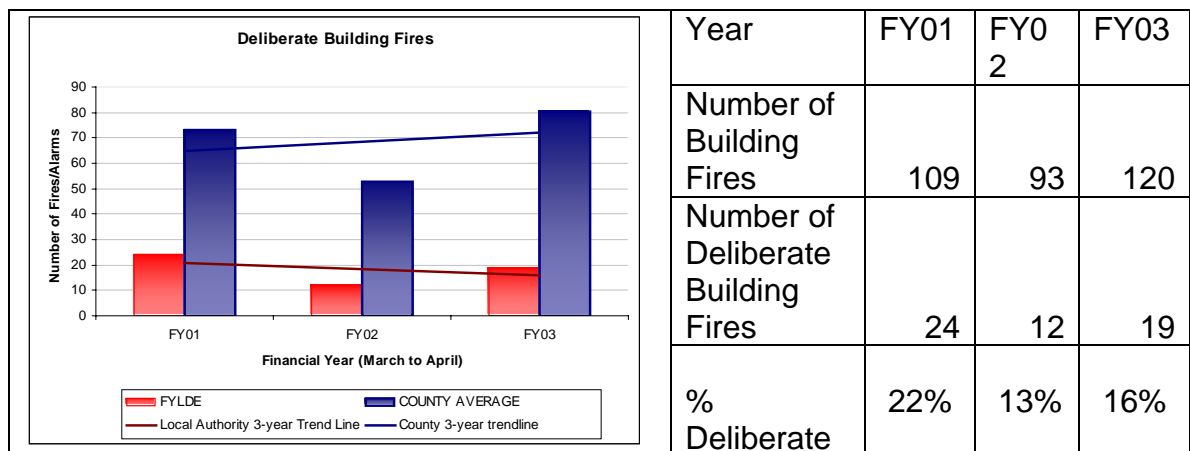
Accident and Emergency Departments do not, at present, report on patients who have been a victim of Domestic Violence, except in anecdotal evidence in patient notes. If such reporting was brought in, it might give a more accurate picture of the more serious incidents of domestic violence in Lancashire

Criminal Damage to Dwellings in Fylde is well below the County average and is fairly stable. Only Central ward has a level of criminal damage to dwellings greater than the County average.

Ward Name	Rate Per Thousand Households	No. of Crimes
	April 03 – March 04	
Central	21.7	46
County Average	18.6	0
Freckleton East	9.2	12
Warton And Westby	8.9	18
Kirkham South	8.6	10
Medlar-With-Wesham	7.7	10
Heyhouses	7.5	16
Staining And Weeton	6.7	8
St Johns	6.7	12
Kilnhouse	6.6	13
Ansdell	6.5	12

Deliberate fires in buildings in Fylde have remained relatively stable over the last three years and are significantly lower than the County average. The proportion of all building fires which are deliberate, has dropped from 22% to 16%.

Geographically, no Wards stand out as having a particular problem. No wards had more than three deliberate building fires in the most recent financial year.



Source: Lancashire Fire and Rescue Service/MADE

The Police don't specifically identify neighbour nuisance as a category within their recording system but classify it under a generic heading of 'Community Problem'.

There were 57 individuals who complained of Neighbour nuisance during FY 2003/04.

20 of these complainants were referred to the Local Authority to deal with as noise nuisance (see chapter 7), leaving 37 to be dealt with by the Police.

Safe and secure streets/public places

Violent crime is approximately half the County Average but is rising. This rise can be explained by changes in the recording of violent crime statistics. (See appendix E)

Prof. D.G. Wastell's (UMIST) studied the more serious offences of Violent Crime in Lancashire.

Figure 1 shows the quarterly trend for serious violent crime. The step increase due to the tightening of recording practices at the outset of FY2003 is clearly seen. There is a 341% increase since 1999.

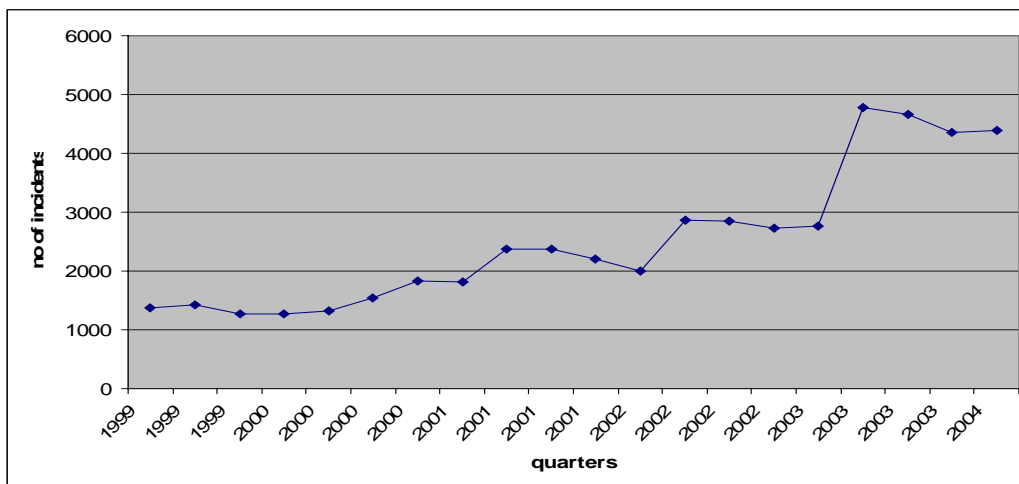


Figure 1: Quarterly trends in serious violent crime

It is arguable that ambulance data is less subject to changes in recording practice and operational policy. The increase in violence according to these figures is much less sharp at 44% (gross number of incidents). The total number of recorded ambulance incidents has only risen 12% (total ambulance demand).

This suggests that whilst there is an underlying trend of rising violence, it is grossly overestimated in the crime statistics.

75% of Violent crime and Harassment are woundings and common assault

33% of victims were strangers to the offender.

62% took place in a public place

Central Ward saw the most Violent Crime

There is a strong link between Violent Crime and Alcohol abuse (More in Ch. 8)

It is higher at weekends and evenings, peaking at pub closing time.

Seasonal peaks occur at Christmas and when the weather is hot. Troughs occur in Winter, especially February.

In FY 2003/04 54% of victims of violent crime in Fylde were male and 46% female. Victims are predominantly teenagers or in their twenties.

39% of Violent Crime offenders were drunk or under the influence of drugs at the time of offending.

83% of offenders are male, and only 17% are female. They are predominantly teenagers or in their early 20s.

The biggest problems identified by the Public for both the County and Fylde are groups of youths hanging around and youths drinking on the streets. (Opinion and LiL Surveys)

The position in relation to the 'Most Similar CDRP's' at the end of October sees Fylde improve to 3rd place with an offence rate of 2.8 per 1000 population.

Street Disturbances are recorded as incidents by the Constabulary. The number of incidents of disturbance in the streets has been on the decrease over the last three years from 144 to 133.

Both Lancashire Constabulary and Lancashire Fire and Rescue report that Arson/Deliberate Fires are lower in Fylde than the County average. The trend is stable

66% of deliberate fires identified by Fire and Rescue between April 2003 and March 2004 are ascribed to a youth (aged 10 to 17).

Kilnhouse appears as the ward with the highest incidence of Arson, having a slightly higher rate than the County average. It also appears near the top of the list for deliberate fires, but is below the County average for this indicator. However, the Ambulance service only had 32 casualties where the presenting complaint was Fire, Burns or Explosions between April 2003 and March 2004.

Vehicle crime has been on a gradual downward trend over the last three years.

Nearly 65% of vehicle crime in the period April 2003 to March 2004 was Theft from a Vehicle, with the remaining 35% being theft of a vehicle.

The comparison chart with the 'most similar families' shows Fylde to be the 2nd best performing CDRP in this area.

Two areas of concern are deliberate vehicle fires and criminal damage to vehicles, both of which are increasing. However, both are well below the County average.

It is worth noting that theft of pedal cycles has increased in Fylde this Financial Year.

Anti-Social Behaviour

We have supported the Police in the imposition of Anti-Social Behaviour Orders (ASBOs). Currently we have 10 active orders in Fylde. 50% of all orders are for adults well over the age of 18.

There is no evidence of prostitution in Fylde CDRP.

There is little evidence of aggressive begging being a problem in Fylde. Last Financial Year there was only one complaint and only two the year before.

Deliberate secondary fire setting in Fylde is approximately one third of the County Average and is relatively stable. 69% of deliberate secondary fires during the period April 2003 to March 2004 were set by a Youth (Aged 10 to 17).

Malicious false alarms have shown a rise for the last Financial year but remain well below the County average.

The main issues for the public are dog fouling, litter and youths hanging around streets.

Domestic disturbances and noise nuisance arising from loud music are the two areas that have seen increases over the last three financial years.

Substance Misuse

The Government's Ten-Year Strategy for Tackling Drug Misuse established the vision of creating a "healthy and confident society, increasingly free from the harm caused by the misuse of drugs", using a combined approach of enforcement, prevention and treatment. The strategy required the establishment of multi-agency partnerships called DATs (Drug Action Teams) to achieve the following objectives:

- To stifle the availability of illegal drugs on our streets.
- To enable people with drug problems to overcome them through treatment, to live healthy crime-free lives;
- To help young people resist drug misuse in order to achieve their full potential;
- To protect our communities from drug-related anti-social or criminal behaviour

Figures for Drugs Trafficking have been derived from Home Office Codes 92.1, 92.3 and 92.7 (Trafficking in controlled drugs, Supplying Drugs, Possession with Intent).	April 2001 to March 2002	April 2002 to March 2003	April 2003 to March 2004
Number of Crimes	5	15	55
Rate per 000 Population	0.1	0.2	0.8
Lancashire (Rate per 000 Population)	0.4	0.7	0.6

Source: Lancashire Constabulary/MADE

The significant increase of drug trafficking offences in Fylde, for FY 2003/04 can be explained by Operation 'Nimrod', a police initiative targeting local drug dealers.

Looking at a ward breakdown of trafficking offences we see:-

	2003/04	2002/03	2001/02
Central	31	2	0
Ansdel	13	0	0
Heyhouses	4	0	0
Kirkham South	3	4	1
Fairhaven	1	2	1
Ashton	1	1	1

All the remaining Wards have between none and three offences since the year 2000. The top 3 Wards for FY 2003/04 reflect the work done on Operation Nimrod (see Drug Initiatives). Kirkham South would appear to be the most consistent Ward over the three year period but has Kirkham Prison within its boundary, where visitors attempt to supply drugs to prisoners.

Again the rate of simple possession per thousand population has stayed relatively static in relation to the population in Fylde and the numbers are comparatively low.

Heroin is the most prevalent drug in use, according to the National Drug Treatment Monitoring Service in 2001, accounting for 79% of all drug misuse. Cannabis accounted for the most seizures by the Police and other authorities followed by Heroin.

Police intelligence also identifies Heroin as the main problem drug in the Fylde.

There are relatively small numbers of identified drug offenders for trafficking and there is not the data available to do a meaningful profile.

“There are 2,000 Lancashire Residents in Prison in the UK. Of these, 60% are drug using offenders.”

There were 11 Fylde residents in prison as at February 2004:-

Table 2: Drug treatment in Fylde and Lancashire for 2003/04. (12 Districts)

	New	Ongoing	Total	% of North West Regional Total
Fylde	54	57	111	0.39
County	1594	1757	3351	11.74

Looking at acquisitive crime it can be seen that there has been a shallow reduction since the year 2000.

Comparing the year on year totals of Fylde’s acquisitive crime, we can see that it is below half the County Average.

	2003/04	2002/03	2001/02
Fylde totals	2408	2021	2610
Lancs Average	4940	4888	5354

Breaking this sort of crime down to Ward levels shows that the busy Town Centre Wards of Central and Ashton are by far the worst hit with Clifton and St. Leonards clearly in 3rd and 4th. Place for FY 2003/04

Drug Services. There are little or no Drug Services available in the Fylde specific for Fylde residents at present. People wanting access to this sort of facility have to go elsewhere. However the D.I.P. (see Initiatives) will provide a step change to this situation by providing access to a prescribing doctor as well as support for targeted individuals.

Drugs deaths from Coroners Court. NB, figures are for Blackpool and Fylde:-

Number of Deaths	FY01		FY02		FY03	
	Male	Female	Male	Female	Male	Female
Non dependant drug users	3	3	3	1	2	1
Dependant drug users	4	0	12	2	3	1
Totals	10		18		7	

The social costs are also evident in the cost to the Health Service. There appears to be some correlation between Ambulance Service call outs due to overdoses, ingestions and poisonings (which could be accidental as well as deliberate) and drugs possession.

Between April 2003 and March 2004, there were 233 people picked up by the Ambulance Service in the Fylde area where the chief complaint was overdose, ingestion or poisoning.

The number of disturbances in Licensed premises has reduced over the last three financial years from 97 to 135 to 88 in each respective year.

In the period April 2003 to March 2004 11% of violent crimes in Fylde took place in a Licensed Premise

Violent Crime represents 16% of All Crime recorded in Fylde and 39% of offenders caught were found to be under the influence of Alcohol/drugs. Professor D.G. Wastell identified a link with Violent Crime and normal drinking hours and noted a new trend at weekends developing since 2001. He concludes:-

“Given that much binge drinking is associated with the weekend, these trends are consistent with the view that such drinking has become a more serious problem in recent years, and is a significant factor in the overall rise in violent crime.”

The public and business consultations have always considered the sale of alcohol to U18's to be a problem and a cause of much anti-social behaviour. Although Trading Standards data did not show a particular problem a Police operation as part of Nightsafe did. They found that several Fylde off licenses were willing to sell to someone who was clearly underage.

Safe and secure travel

There were 27 incidents on buses in the period April 2002 to March 2003. Between September 2003 and May 2004 there have been 53 incidents, this can be mainly explained by improvements in reporting mechanisms.

The number of crimes on Train stations in the Fylde area have remained relatively constant over the last three years. Kirkham Railway station has been identified as a hotspot.

Each year on the roads in Lancashire 9,000 people are injured, 1,000 people are seriously injured and 70 people are killed in crashes.

Fylde accidents and casualties have remained fairly stable over the last 3 years. The main problem areas are the more rural wards with major arterial roads.

Costs of accidents

ACCIDENT & EMERGENCY	
In-Patient Care, Theatre Procedures, Treatment Resources	£76,000
<hr/>	
INTENSIVE CARE UNIT	
Treatment, Resources	£16,000
<hr/>	
OUT-PATIENT CARE	
X-Rays & Scans, Neurosurgery, Treatment, Occupational, Therapy Physiotherapy	£8,000
<hr/>	
	Total £100,000

Driving too fast was the main cause of 1,200 deaths and more than 20,000 serious injuries on built up roads in the UK last year. The main cause of road crashes is the combination of inappropriate/excessive speed and human error. Approximately 1 in 3 deaths is speed related.

The British Crime Survey identified speeding as the No.1 Anti -Social Behaviour issue.

It has been proven that safety cameras make people drive slower and as a direct result, reduce crashes and help protect road users.

Fylde have 13 fixed sites and 9 community concern sites

On average 3500 killed or seriously injured annually in drink – drive accidents 1 in 7 deaths involve drivers over the limit

The percentage of drivers failing breath tests after accidents has fallen from 8.5% to 3.7% since 2000.

In 2000 there were 2394 arrests for Driving over the limit in Lancashire
17 – 25 year olds are the biggest offenders in Lancashire.

Wearing a seat belt in the front seat saves over 2,500 lives every year.
despite being three times more likely to suffer death or serious injury People
don't always use rear seatbelts.

Lancashire Partnership for Road Safety initiatives are designed to achieve the
national 2010 casualty reduction targets by 2005, a reduction of site-specific
ambient speed levels, deliver savings to the Health Service, change road user
behaviour and prove the relationship between extensive focussed publicity
and enforcement on casualty reduction.

CDRP initiatives :-

Kirkham railway station has been identified clearly as a hotspot and a rapid
deployment CCTV pole is in the process of being installed. This will enable
one of two rapid deployment hotspot cameras to be used to monitor and
record this area.

A multi-agency initiative on a specific route where a PCSO sat on the bus
over a period of time turned a notorious route into a much improved and safe
route (Spring Gardens P.O.P)

Provision of safe motorcycle parking

Cycle track provision – Ribby Road Kirkham and Park View Lytham

Child Safety Week

Submission of Community concern speed enforcement sites to Lancs. Road
Safety Partnership.

OPINION 2004:-

7% (9) of respondents in Fylde CDRP (and 9% (223) at force level) claim that
something has happened in the past 12 months to make them feel less safe
when travelling either in their car or on public transport. The main reasons
given for this are aggressive drivers/road rage and anti-social behaviour on
public transport

Again, when considering the use of public transport, anti-social behaviour is
considered far more of a threat to feelings of safety than any other issue (34%
(45) Fylde CDRP, 45% (1113) force)

The Life in Lancashire survey reflected the Publics concern re antisocial
behaviour on Public Transport.

Protecting Diversity

Racially motivated crime is below the County average and levels have remained stable over the last three years.

Racial incidents among school children reported to Fylde Local Education Authority are very low compared to the rest of the County. Only between 1 and 4 incidents have been reported for the last three school years.

Lancashire Constabulary put a 'flag' on crimes which they feel has a homophobic cause. There were 6 identified in FY 2003/04.

Harassment in Fylde is considerably below the County average and much of the apparent increase between 2003 and 2004 can be explained by the change in recording practice.

The Gay and Lesbian community want more understanding and reassurance from the authorities, more high profile gay police officers and better contact with trained police/police staff. Comment was made on how much better police attitudes were and that this should be widely publicised. This will encourage them to report more crime.

Their biggest fears are repercussions, their identity being revealed and effects on livelihood.

Young People

Juvenile Nuisance is not a crime. It measures the number of incidents where a juvenile is perceived to be the offender by the caller. Juvenile Nuisance in Fylde is below the County average and following a stable trend.

Hotspot wards between April 2003 and March 2004 for Juvenile Nuisance are detailed in the table below. Data for Lone Parent Families and Families with no car or van have been included as these are considered to be a good predictor of juvenile nuisance (D. Wastell, 2003). The figures in blue show above average rates of Lone Parent Families and Households with no cars.

Ward Name	% Lone Parent Families	Households with no car	Juvenile Nuisance	
	(Rate per Thousand Households)		(Rate per Thousand Population)	Number of Incidents
Central	66.2	352.1	92.74	392
Ashton	28.3	280.9	53.91	238
Kilnhouse	58.3	216.3	42.37	173
Lancashire Average	70.7	113.9	40.26	
Warton and Westby	55.6	144.6	39.97	187
Kirkham North	55.8	163.8	37.11	150
Medlar-with-Wesham	95.1	205.6	36.98	120
Kirkham South	66.3	251.5	34.68	107
Heyhouses	38.8	231.8	24.09	106
Ansdell	36.7	199.6	24.03	97
Freckleton East	68.3	163.6	23.44	75
St. Leonards	56.6	212.1	19.64	83
Clifton	30.2	203.7	18.27	71
Staining and Weeton	64.9	137.1	18.19	62
Park	35.8	210.5	14.68	58
Freckleton West	40.3	174.2	14.05	40
Fairhaven	31.3	208.7	11.61	47
St. Johns	75.1	185.5	10.60	43
Elswick and Little Eccleston	36.6	75.2	9.78	14
Newton and Treales	48.0	98.4	7.68	24
Ribby-with-Wrea	36.3	69.3	5.37	8
Singleton and Greenhalgh	29.1	102.7	2.24	3

There is clearly a close geographic correlation between incidents of Juvenile Nuisance as reported to Lancashire Constabulary and the location of deliberate secondary fires set by Youths (Aged 10 to 17) as reported by Lancashire Fire & Rescue, with Ashton, Central and Kilnhouse appearing in the top three of both lists.

Deliberate Secondary Fires Set By Youths (April 2003 to March 2004)	
Ward Name	Number of Fires
Ashton	8
Central	8
Kilnhouse	8
St. Leonards	7
Warton and Westby	6

Source: Lancashire Fire and Rescue Service/MADE

If the time and date of calls to Lancashire Constabulary about Juvenile Nuisance are analysed, patterns can be seen. Juvenile Nuisance calls start increasing around the time schools break-up and peak at 10 o'clock at night. Thereafter they tail right off.

The picture over a week shows that Juvenile Nuisance calls are most frequent on a Friday and a Saturday.

Youth offenders represent a very small percentage of the youth population. However, research has shown that a far higher percentage are at risk of offending. There are a number of established risk and protective factors which can combine on an individual basis to influence outcomes for young people, including offending and anti-social behaviour but also including victimisation.

An index has been constructed using as many of these factors as possible to indicate wards where the risk of youth offending is highest. Full details on how this index was constructed are included in appendix G

There were 370 individual offenders identified as being aged 10 to 17 years and living in Fylde between April 2003 and March 2004. The Age/Sex profile shows that the majority of young offenders are male and aged 15 or over.

The table below lists the most numerous crimes where the offender has been identified as aged 10 to 17 and the crime took place in Fylde between April 2003 and March 2004.

Crime Category	Number of Crimes
Other Wounding	54
Common Assault	41
Damage Vehicles	25
Shoplifting	25
Damage Dwellings	24
Damage Other	20
Damage Buildings	19
Drugs (Simple Possession)	16
Vehicle Taking	15

Source: Lancashire Constabulary

44% of offenders aged between 10 and 17 committed more than one crime in the Fylde area between April 2003 and March 2004.

The Youth Offending team deliver a service to reduce and prevent offending by children and young people. They deal with the age group 10 to 17. Two targets which they report against are:

Recidivism - this is measured by taking a sample group of Youth Offenders who live in Fylde and measuring how many of them re-offend. The recidivism figure as at June 2004 is 21.1%, which can be compared with a County (excluding Blackburn and Blackpool) rate of 19.2%.

First time offending – this is measured by looking at Youth Offenders who become known to the YOT for the first time. At present Fylde is just outside its target.

Business and Retail

There are 2,683 companies in Fylde, representing 5.7% of businesses in Lancashire (Annual Business Enquiry 2001).

Shoplifting in Fylde is below the County average and the volume has remained stable over the last three years.

Rate Per Thousand Population

	April 2001 to March 2002	April 2002 to March 2003	April 2003 to March 2004	Lancashire Average April 2003 to March 2004
Shoplifting	3.9	3.1	3.8	6.0
Robbery (Business)	0.08	0.05	0.03	0.10
Deliberate Fires to Commercial Premises	0.14	0.07	0.04	0.20

There are no fraud offences dealt with by Trading Standards during FY 2003/04.

Robberies of businesses are very low volume in Fylde.

At a business consultation meeting held in Fylde no-one indicated any major or specific problem affecting their business and no one would wish to relocate. The issues that did come out were:-

- The free availability of alcohol to young people. All present wished this problem would be addressed.
- Design out crime in planned environments (CCTV, better lighting etc..)
- Encourage more information sharing and improved communication between businesses and police, particularly with regard to persistent offenders.
- Encourage greater business involvement in the work of the Local CDRP and identification of areas of work which the local partnership could take forward.
- Clearly identify who the key stakeholders are or should be in the area.

CCTV continues to have a positive effect on businesses with specific areas reporting dramatic reductions in nuisance/anti social behaviour and damage.

Cost of Crime

We can gain a rough estimate of the cost of crimes in Fylde between April 2003 and March 2004.

Crime Type	Average Cost (£)*	Volume	Cost to Fylde £
Violence against the person	19,000	780	14,820,000
Sexual Offences	19,000	36	684,000
Burglary in a Dwelling	2,300	277	637,100
Criminal Damage	510	1315	670,650
Theft from a Vehicle	890	309	275,010

* Source: Brand & Price (2000)

We can also gain a rough estimate on the costs of certain types of anti-social behaviour.

Nuisance Type	Average Cost (£)*	Volume	Cost to Fylde £
Abandoned Vehicles (Disposal)	100	159	1,590
Noise	500	198	99,000
Neighbourhood Disputes	3,000	6	18,000
Hoax Calls (One fire engine, response to 999 call)	300	29	8,700
Cost of replacing a Bus Shelter	2,000	0	0

* Source: Whitehead, Stockdale and Razzu (2003)

