



Crime and Disorder
Strategy 2005-2008



Contents



Page 4

Introduction

Page 5

Audit Results/Consultation
Breakdown of crime

Page 6

Map of all crime
Partnership Working

Pages 7

Objectives

Delivery

Page 8

Targets

Structure

Monitoring & Evaluation
Resources

Cross cutting issues

Fear of Crime

Victim/Witness Support

Protecting Diversity

Pages 10-11

Prolific & Other Priority
Offenders

Pages 12-13

Anti-social behaviour/
Criminal Damage

Pages 14-15

Drugs

Pages 16-17

Violent Crime and Alcohol

Pages 18-19

Domestic Violence

Page 20

Road Safety

Page 21

Partners

Pages 22-23

Appendix 1 –
Partnership Structure

Introduction



Welcome to the third Crime and Disorder Reduction Strategy for Rossendale which has been produced by Rossendale's Community Safety Partnership.

The Crime and Disorder Act 1998, as amended by the Police Reform Act 2002 places a duty on the Partnership to produce a Crime and Disorder Strategy every three years. This includes a requirement to include a strategy for tackling anti-social behaviour as part of the overall document.

The Partnership is made up of representatives from Rossendale Borough Council, Lancashire Police, Lancashire County Council, National Probation Service, Burnley Pendle and Rossendale Primary Care Trust, Lancashire Fire and Rescue Service and other key partner agencies.

This Strategy covers the three year period from April 2005 to March 2008 and is based on the key issues identified in the Crime and Disorder Audit carried out in December 2004 and national targets set by Government.

Audit Results/Consultation



The Audit is a detailed analysis of Rossendale's crime and disorder problems and priorities.

It includes a number of surveys carried out throughout the year which sought views from all sectors of the community on a range of issues including quality of life and fear of crime. The results were then fed into the audit process.



During the year 2003/04, criminal damage accounted for 24% of all recorded crime, violent crime 18% and vehicle crime 16%.

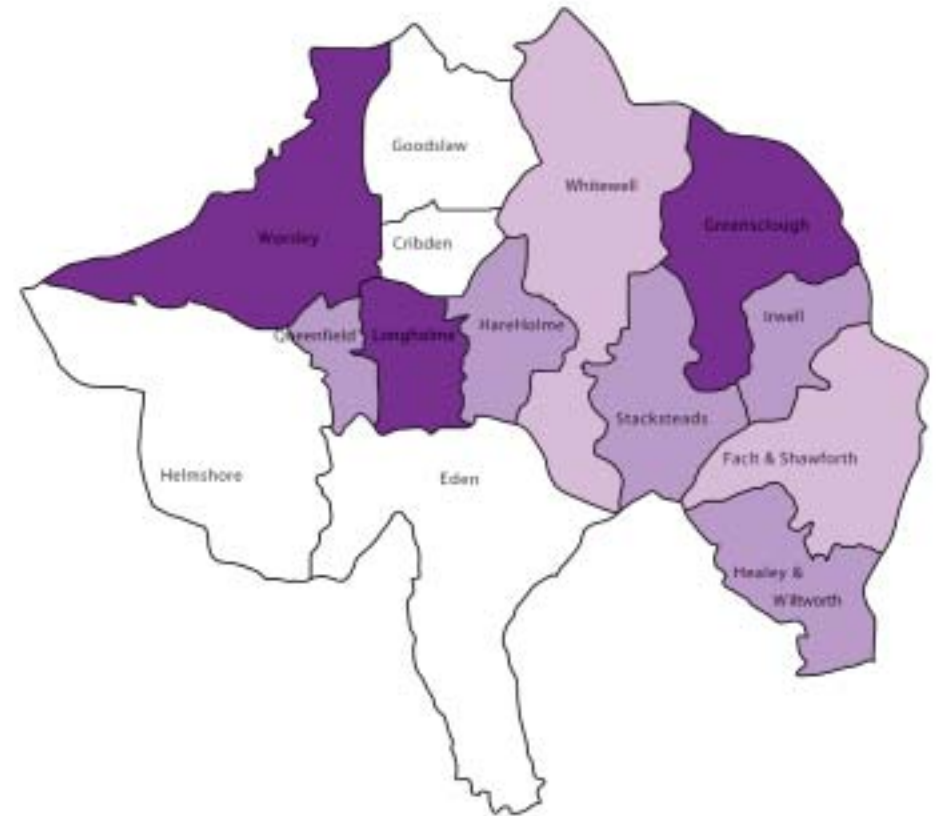
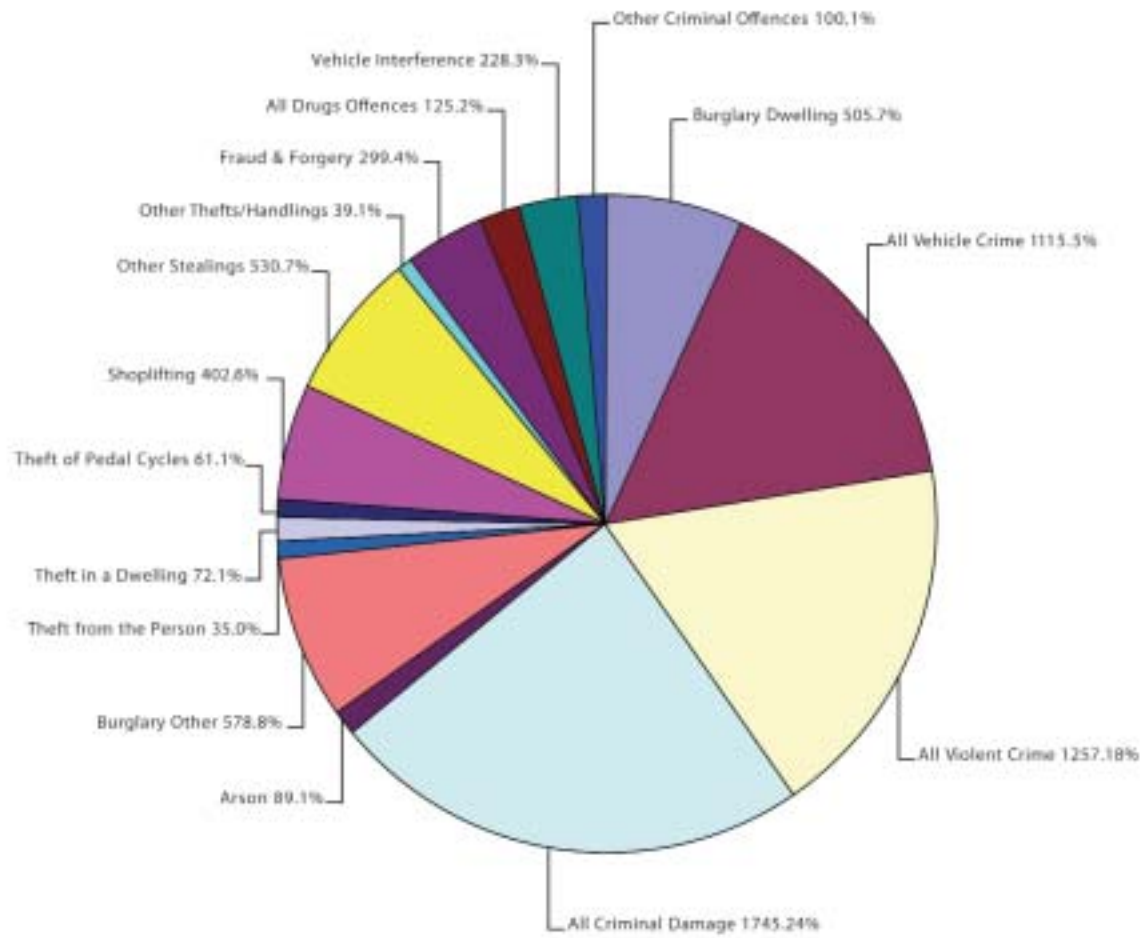
Greensclough, Worsley and Longholme Wards had the highest rate of recorded crime in the Borough, followed by Hareholme and Irwell.

Anti-social behaviour is a major issue for residents. Speeding vehicles, dog fouling, rubbish and litter, young people hanging around and under age drinking were cited as the main neighbourhood problems.

Details of all the surveys can be found in the full Audit Document (Pages 140-141) available on Rossendale Borough Council website, www.rossendale.gov.uk and on the Safer Lancashire website, www.saferlancashire.co.uk.

Top Crimes: Criminal Damage, Violent Crime, Vehicle Crime

All Crime in Rossendale (April 2003 to March 2004)



Partnership Working



Vision

We want Rossendale to be a safe place for people to live, work, visit and invest in. We aim to help local people help themselves by implementing crime and disorder reduction strategies at a local level, which fully address the needs of our local communities.

Our aims

- To reduce crime in the Borough
- To reduce anti-social behaviour and disorder
- To reduce people's fear of crime
- To promote community safety in the Borough.



Our Partnership forms part of 'Rossendale Alive' (Rossendale's Local Strategic Partnership) providing easy opportunities to make links with the ongoing work of the other theme groups in the partnership and support the overall Community Strategy. These groups include;

Community Network
Health & Wellbeing
Economy
Environment

Housing
Education and lifelong learning
Culture

Through these networks and partnerships this strategy is able to support the work of other agency plans such as the Policing Plan, the National Drugs Strategy and the Fire and Rescue Service Plan.

Our strategic objectives are



Crime

- to reduce crime by 17.5% as calculated against the British Crime Survey comparator by March 2008.



Delivery

It has been accepted that the current structure of the Partnership is not as effective as it should be. Therefore, in consultation with key partners a restructure of the Partnership has been carried out to enable the successful delivery of the new Strategy (Appendix 1). This will give more focus and ensure targets are achieved at the end of the three years.

The new structure will focus on areas identified in the Crime and Disorder Audit and will link with other established specialised groups in order to obtain the best results.

Quality of life

- to reassure local people, by reducing the fear of crime and tackling anti-social behaviour.

The main focus for the Partnership will be in the following areas:

- Prolific and other priority offenders – reducing acquisitive crime
- Anti-social behaviour and criminal damage
- Drugs – dealing, misuse, education
- Violent crime and alcohol – underage drinking, licensing issues, night time disorder
- Domestic violence – reducing re-victimisation.

Drug misuse

- to reduce the harm caused by illegal drugs including substantially increasing the number of drug misusing offenders entering treatment.

These will remain the same for the three year period, but targets and timescales will be reviewed annually through an action planning process.

Targets

Targets will be reviewed every year through an action planning process, which will ensure that any new emerging themes are incorporated into plans.

We have set targets that we believe to be both challenging and achievable across the full range of objectives.

Although these objectives will be the main focus for the Partnership, we will also support, when required, other initiatives which will assist the reduction of crime and disorder within the Borough.

Structure

Multi agency working is the key to reducing crime and disorder. The new structure within the Partnership will ensure that clear performance targets are set, monitored and evaluated.

The five themed groups will be made up from partner agencies, thus achieving full shared responsibility across the Partnership for meeting targets.

Monitoring and Evaluation

The Steering Group will receive quarterly progress reports from each theme group. This will enable the Partnership to identify any problems and take the necessary action to ensure targets are reached. A full evaluation will take place at the end of the three year strategy period to measure our success.

Resources

The Partnership has the lead role in managing funding from Government to tackle crime and disorder related issues. We will also seek funding

from other sources wherever possible. It is also acknowledged that the partner agencies will use elements of mainstream funding to implement the Strategy.

Cross cutting Issues

The objectives within the Strategy are based on the results of the Crime and Disorder Audit and have a number of cross cutting issues. The themed groups will work together to ensure that where links are identified, joint projects will be put into action to address the problems.

Fear of Crime

We will produce a programme of information and publicity to assist in the reduction of fear of crime and anti-social behaviour.

Victim/Witness Support

We will work with the Victim Support Service to identify funding to continue and extend their work with victims and witnesses across the Borough.

Protecting Diversity

Numbers of racially motivated crimes have remained low, but relatively constant over the last three years. However, we realise it is difficult to assess the full extent of racially motivated crime along with homophobic crime as they are under reported.

We will work together to increase reporting of incidents by building on the 'third party' reporting scheme that has been introduced by the Lancashire Constabulary.

Objective 1 : Prolific & Other Priority Offenders – reducing acquisitive crime



Lead:

Chair – Community Safety Partnership
Prevent and Deter – Youth Offending Team
Catch and Convict – Police
Resettle and Rehabilitate – Probation Service

Partners:

Police, Probation, Prison Service, Youth Offending Team, Local Authority, Job Centre Plus, Connexions, Education Welfare Service, Youth & Community Services



Background

We all know that a relatively small numbers of people cause a disproportionate amount of crime, disorder and anti-social behaviour in our communities. Leading to an increase in feelings of unease and the fear of crime.

In Rossendale in 2003/04 the top 10% most prolific offenders were responsible for 35% of detected crimes.

The Prolific and Other Priority Offender Strategy (PPO) was launched by the Home Office in April 2004 and has three strands:

Prevent and deter – working at the early stage with children and young people who are most at risk of becoming serious offenders, thus providing a better chance of preventing anti-social and offending behaviour and providing better life chances.

Catch and convict – identifying through intelligence, a small number of individuals who are causing most harm to the communities. These will then be targeted through various interventions to ensure they are taken out of the picture

Rehabilitate and resettle – working intensively with individuals who have been prolific or priority offenders whilst they serve their sentences – either custody or community – offering multi-agency support to prevent their relapse.

Prolific & Other Priority Offenders – reducing acquisitive crime



Although there are three specific strands within the Strategy, each group will work closely as one person may fall within any one of three strands.

There will however, be closer links between catch and convict and rehabilitate and resettle as the offenders will in the main be adults. The Prevent and deter strand will concentrate on young people.

Targets

- Reduce crime by 17.5% by March 2008 against 03/04 baseline
- Reduce the rate of re-offending by young offenders (LPSA4)
- Prevent offending by young people (LPSA8).

Actions

Members of the sub-group will work together on specific prevention projects as and when required to target domestic burglary, vehicle crime and business crime hot spots

- Continue to offer target hardening packages to victims of domestic burglary and street robbery along with potential repeat victims
- Seasonal pro-active crime prevention measures to raise public awareness e.g. in relation to 'sneak in' burglaries during the summer/not leaving shopping on view in vehicles especially around Christmas
- Extend the Vulnerable Vehicle Scheme
- Extended use of CCTV and town centre radio schemes
- Improve and expand Shop Watch Schemes
- Work with the anti-social behaviour group to explore the introduction of Alleygates in areas of major concern.

Objective 2 : Anti-Social Behaviour/Criminal Damage



Lead:

Local Authority – Head of Streetscene and Liveability

Partners:

Rossendale Council, Police, Fire and Rescue Service, Youth and Community Services, Youth Offending Team, Connexions, Rossendale Leisure Trust, Groundwork (Youthworks), Group Intervention Panel

Background



The issue of anti social behaviour was identified as a key priority for the residents of the Borough. The definition of anti-social behaviour is when a person acts in a manner that causes or is likely to cause harassment, alarm or distress to a person not of the same household. It is linked closely with criminal damage.

Anti-social behaviour does not always involve criminal activity but it impacts greatly on quality of life. It can take many forms and involve intimidation, noise, rubbish dumping, litter, graffiti, deliberate fire setting and neighbour nuisance.

It is very difficult to set simple quantified targets to reduce anti-social behaviour as much goes unreported. We intend to use a mixture of interventions to enable us to show a reduction in both criminal damage and anti-social behaviour.

The main issues identified during consultation were young people hanging around, youths drinking, rowdy behaviour, dog fouling and litter.

Criminal Damage was the largest volume crime recorded during 2003/04 accounting for 24% of all recorded crime in the Borough.

Anti-Social Behaviour/Criminal Damage



Targets

- Reduce Criminal Damage by 8.2% by March 2008 against the 2003/04 baseline
- Reduce Deliberate Secondary Fires by 5% by March 2008
- Reduce the number of Malicious False Alarms by 5% by March 2008
- Increase the amount of youth work provision
- Further develop targeted youth work and the provision of diversionary activity by a partnership of providers
- Increase the number of Acceptable Behaviour Contracts year on year
- Increase the number of fixed penalty notices issued in relation to dog fouling
- Reduce the number of complaints of domestic noise by 20% by March 2006
- Increase the number of prosecutions of night time noise.

Actions

- Identify 'hot spots' working in each area for a 12-week period
- Establish rapid response arrangements for removal of abandoned vehicles, rubbish and drug paraphernalia
- Establish rapid response arrangements for the security of empty premises
- Rapid removal of combustible furnishings from empty dwellings
- Removal of fly tipping and other combustible waste
- Implement preventative measures to cover 'hot spots' e.g. CCTV, and Alleygates
- Promote and implement preventative measures tin 'hot spot' areas e.g. leafleting and posters
- Establish parenting skills programmes
- Promote a growth in youth work provision across the Borough by a range of providers and by supporting the objectives set out in the Youth Provision Strategy
- Anti-social Behaviour Orders, Acceptable Behaviour Contracts, Youth Referrals to a Group Intervention Panel or Youth Offending Team
- Measures to reduce availability of alcohol to young people including test purchasing programmes at on and off licenses
- Maintain the use of mediation
- Promote tolerance between young people and adults.

Objective 3 : Drugs – Reducing harm



Lead:

Crime and Disorder Reduction Partnership Police Authority Representative

Partners:

Rossendale Council, Police, Probation, Lancashire Drug Action Team, Primary Care Trust, Inward House Project, Community sector, Youth and Community Services

Background



The links between drugs and crime are well documented. The Government's 10 Year Strategy - 'Tackling Drug Misuse' established the vision of creating a 'healthy and confident society, increasingly free from the harm caused by the misuse of drugs', using a combined approach of enforcement, prevention and treatment.

The four main themes of the Drug Strategy are:

- Availability
- Treatment
- Young People
- Communities.

We will mirror these themes within our own Crime and Disorder Reduction Strategy to contribute towards achieving the nationally set target - PSA4 - to reduce the harm caused by illegal drugs. PSA4 includes substantially increasing the number of drug misusing offenders entering treatment through the criminal justice system.

Results from the Audit carried out in December 2004 showed that nearly a quarter of Rossendale residents thought that dealing illegal drugs was a big problem. The number of drugs trafficking and supply offences has increased around six fold in the last two years.

Heroin is the highest recorded drug in use in Rossendale with acquisitive crime being the main way to fund its purchase. We have the fourth lowest level of people engaged in treatment in Lancashire and the third highest level of methadone misuse.

We believe progress will only be made by addressing supply and demand. Therefore, we will continue to target the illegal supply of controlled drugs through enforcement. However, we also need to develop education programmes, provide locally based treatment services for drug misusers and increase the numbers of people in treatment.

Drugs – Reducing harm



Improved public education about the misuse of drugs will reduce levels of fear. It will also provide an understanding about misusers and the services provided to them.

The Drugs Intervention Program (DIP) is a critical part of the Government's strategy for tackling crime.

It is a program to develop and integrate measures for directing adult drug-misusing offenders out of crime and into treatment. DIP involves criminal justice and treatment agencies working together with other services to provide a tailored solution for adults – particularly those who use Class A Drugs – who commit crime to fund their drug misuse.

DIP will work closely with the PPO Scheme to ensure the two initiatives operate successfully together to maximise benefits. It is anticipated that those offenders targeted under PPO will be referred to the Drugs Group and DIP.

Targets

- Increase the number of drug users entering into treatment by 9% year on year
- Increase the numbers retained in treatment
- Increase in numbers completing treatment
- Reduce acquisitive crime.

Actions

- Targeted Police operations to reduce the supply of illegal drugs
- Increase the number of people in treatment year on year
- Provide locally based services for drug misusers
- Develop and deliver educational programmes aimed at both young people and adults, especially in those areas of the Borough with the highest levels of substance misuse
- Promote a range of supported housing options for former drug misusers.

The level of harm will be measured by the Drug Harm Index. Included in the harms it captures are number of crimes such as burglary, vehicle crimes, bike thefts and robbery. All of which will clearly impact on PSA1. Drug misusers discharged during the financial year who were retained in treatment for 12 weeks or more.

Objective 4 : Violent Crime and Alcohol



Lead:

Rossendale Council Licensing Manager

Partners:

Rossendale Council, Police, Surestart, Licensed trade, Primary Care Trust

Background

Violent crime came out as the second highest recorded crime in the Borough in 2003/04 with alcohol related violence being identified as a major concern for the communities of Rossendale.

In 35% of violent crimes in Rossendale, the offender was a stranger to the victim. 68% of violent crimes took place in a public place, with the highest number of incidents recorded in Longholme ward.

37% of offenders of violent crime in Rossendale committed the offence whilst under the influence of drugs or alcohol. Analysis of offenders apprehended for violent crime shows that 80% of offenders are male and are predominantly teenagers or in their early 20's.

The most common group of victims are young males aged between 15 and 24 years.

Violent Crime and Alcohol

Targets

- Improve our relative position compared with other similar Crime and Disorder Partnerships by 2008
- Reduce incidents of wounding by 7.5% per annum to March 2008 against the 03/04 baseline
- Reduce violence in Licensed Premises by 15% by March 2008 against the 2003/04 baseline figure
- Promote good practice in dealing with drunkenness and underage sales in on and off licence premises
- Review arrangements in relation to inspections of licensed premises by March 2006
- Extend the use of the Town Centre Radio Schemes to include nighttime use by pubs and clubs on a rolling programme by March 2008.

Actions

Our main action will be to continue to build on what we have started within the current strategy period. We are now seeing a successful reduction in violent crime in licensed premises across the Borough. We want to extend and expand on this achievement giving added value to the transfer of licensing functions from the Courts to Local Authorities

- Establish inter-agency enforcement protocols across the borough
- Establish a uniform approach to enforcement action across the Borough and in conjunction with other authorities across the whole of Lancashire
- Provide a quality regulatory service in the interest of public protection which is effective, thereby ensuring the quality of life for residents, businesses and visitors to Rossendale, increasing public safety and reducing the fear of violent crime
- Provide Best Value by achieving a joint licensing consortium with Burnley Council and Pendle Borough Council
- We will extend the 'Pub Watch' scheme within the Borough
- Promote the use of plastic/ shatterproof glasses within licensed premises and for community events
- Where possible, we will improve and expand the use of CCTV
- We will overtly target problem licensed premises whilst supporting the best licensed premises by awarding the Rossendale Charter Mark Award
- Work with the Primary Care Trust to improve access to services.

Objective 5 : Domestic Violence



Lead:

Rossendale Domestic Violence Forum
Chair – Rossendale Council Community Safety Manager

Partners:

Primary Care Trust, Police, Victim Support, Voluntary Sector, Rossendale Council

Background



Domestic Violence has a devastating effect on victims, their families and the wider community. It is a volume crime affecting one in four women and one in six men in their lifetimes, with women suffering higher rates of repeat victimisation and serious injury. It accounts for 16% of violent crime, covering offences ranging from common assault to rape and murder.

Nationally, one woman is killed every 3 days by their partner or ex-partner. A third of all men serving life sentences killed their partner or ex-partner. 30% of Domestic Violence starts when a woman becomes pregnant. Tackling domestic violence effectively requires a fully co-ordinated multi-agency response from both statutory and voluntary sectors, at both strategic and operational level.

We know domestic violence is a hidden crime. Following on from the last strategy, there has been an increase in the number of calls to the Rossendale Domestic Violence Forum.

So we know that many more victims are receiving the help and assistance needed. However, the Audit has shown a decrease in the number of calls to the Police.

Domestic Violence



Targets

- To increase reporting
- To extend the network of support
- To increase prosecutions
- Reduce repeat victimisation

Actions

- Promote and extend the work of the Domestic Violence Forum
- Joint working with Domestic Violence Groups across the County sharing best practice
- Support victims in securing alternative accommodation when necessary
- Offer appropriate security e.g. alarm, mobile phone and new locks
- Increase support for children of victims of domestic abuse
- Encourage victims to report incidents to the Police to increase prosecutions
- Increase referrals to local Perpetrator Schemes
- Raise awareness through education and training and improvements in service provision particularly targeted towards minority ethnic groups
- Provide easy access to information about support services and helpline numbers across the Borough
- Preventative education in primary and secondary schools
- Develop training package for workplace training
- Encourage local agencies and major employers to develop specific domestic violence policies governing, on the one hand, their contact with service users and, on the other hand, their obligations to employees who may either be victims or perpetrators of domestic violence.

Road Safety



We will continue to work with the Lancashire Road Safety Partnership in encouraging the safer use of roads and transport. This will include the Community Safety Partnership forwarding sites of community concern, in relation to speeding, to the Road Safety Partnership for inclusion in the speeding enforcement programme.

Speeding vehicles were identified by 49% of Rossendale residents as a major problem in the Crime and Disorder Audit.

Targets

- Reduce the number of speeding complaints
- Increase the number of speeding fines issued.

Actions

- Explore the possibility of acquiring a mobile 'speed camera' for local use
- Train Community Beat Managers and Police Community Support Officers in the use of mobile 'speed camera'.



Partners



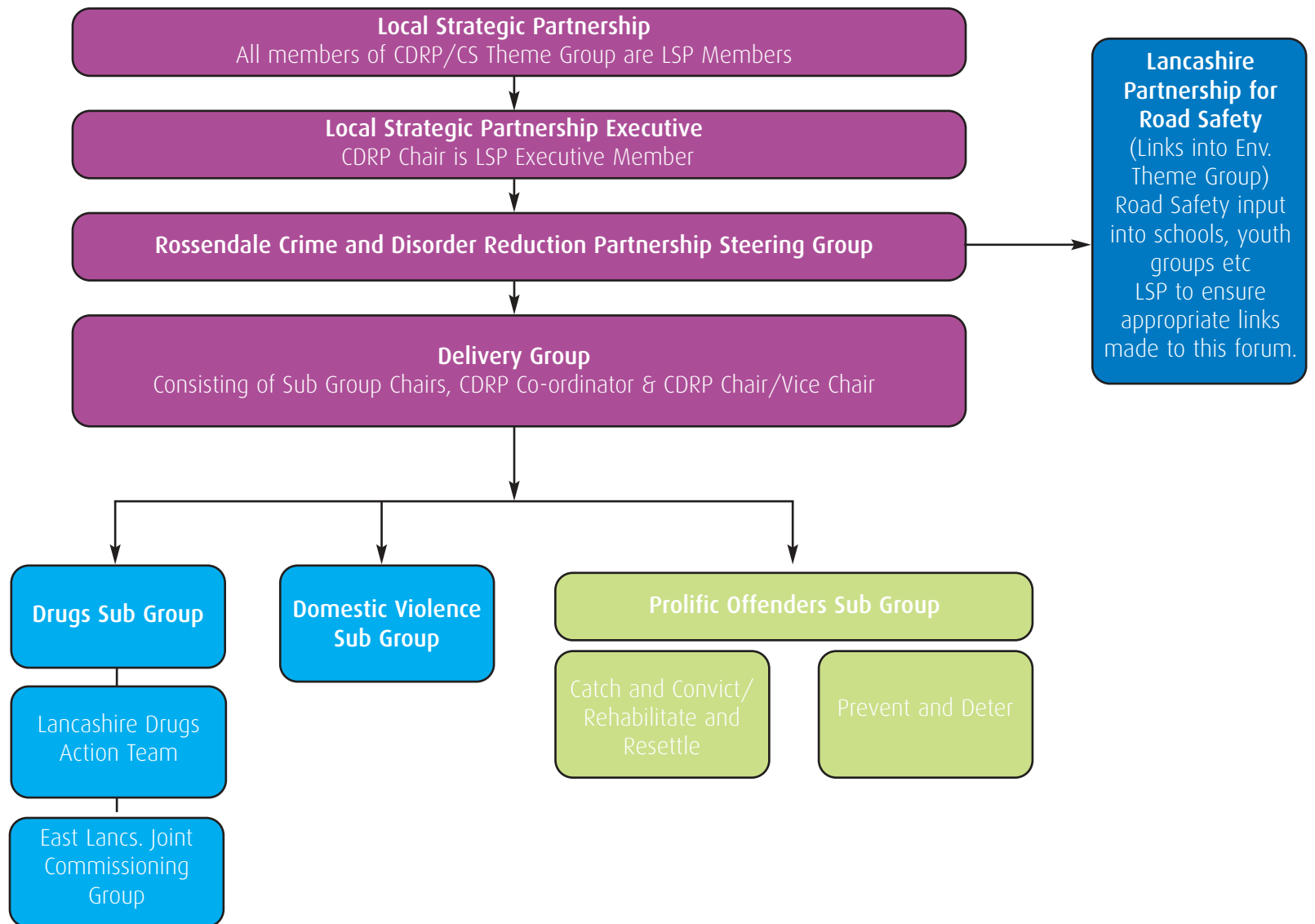
Rossendale Borough Council
Lancashire Constabulary
Lancashire County Council
Burnley Pendle and Rossendale Primary Care Trust
National Probation Service
Lancashire Police Authority
Lancashire Fire and Rescue Service
Lancashire Youth Offending Team
Lancashire Youth and Community Service
Crown Prosecution Service
Victim Support Service
Groundwork Trust
GRIP
Government Office for the North West
Rossendale Domestic Violence Forum
Rossendale Leisure Trust

For further information please contact:

Community Safety Officer
Rossendale Borough Council
Stubbylee Hall
Bacup
OL13 0DE

Tel: 01706 871616

e-mail: trishellins@rossendalebc.gov.uk





T DR





Visit us at: www.rossendalebc.gov.uk

Copies of the information contained within this document will be made available in community languages and in Braille and large print upon request.